

LOC I-BRL 108.9	APP CRS 359°	Rwy Ldg 6102 TDZE 694 Apt Elev 698
---------------------------	------------------------	---

ILS or LOC RWY 36
SOUTHEAST IOWA RGNL (BRL)

T
A NA

MALSR

MISSED APPROACH: Climb to 2800 then climbing right turn to 3000 direct BRL VOR/DME and hold.


ASOS 118,025	CHICAGO CENTER 135.6 370.95	UNICOM 123.0 (CTAF) 0
------------------------	---------------------------------------	---------------------------------

ALTERNATE MISSED
APCH FIX

LOM
BURNS
BR $\overline{\cdot} \cdot \cdot$
390



LOCALIZER 108.9
I-BRL

BURLINGTON
115.55 BRL 
Chan 102(Y)

Procedure NA for arrivals
on BRL VOR/DME
airway radials 192 CW 282.

LOM/IAF
BURNS
390 BR ::
BURNS INT

MSA BRL 25 NM

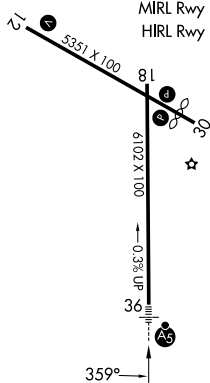
3100

3000
359° (6.
(IF)
GIMGE

3000 NoPT
BRL 14 Arc

(IAF)
HAKAV
BRI 14

ELEV 698	D	TDZE 694
REIL Rwy 12, 18 and 30		L
MIRL Rwy 12-30		L
HIRL Rwy 18-36		L






FAF to MAP 7 NM

Knots	60	90	120	150	180
Min:Sec	7:00	4:40	3:30	2:48	2:20

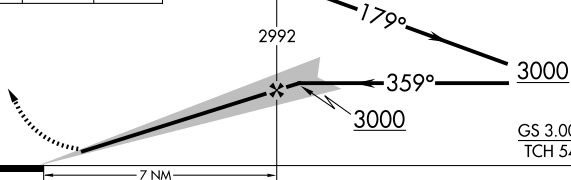
BURLINGTON, IOWA

Amdt 10C 20JUN19

2800	3000	BRL
		

BR
BURNS
LOM/INT

Remain
within 10 NM



CATEGORY	A	B	C	D
S-ILS 36	894-1/2 200 (200-1/2)			
S-LOC 36	1140-1/2 446 (500-1/2)		1140-7/8 446 (500-7/8)	1140-1 446 (500-1)
CIRCLING	1180-1 482 (500-1)		1380-2 682 (700-2)	1380-2 1/4 682 (700-2 1/4)

SOUTHEAST IOWA RGNL (BRL)
ILS or LOC RWY 36

40°47'N-91°08'W