

| | | |
|---------|----------|------|
| APP CRS | Rwy Idg | 3787 |
| 202° | TDZE | 4152 |
| | Apt Elev | 4154 |

RNAV (GPS) RWY 20

BURLEY MUNI (BYI)

RNP APCH-GPS.

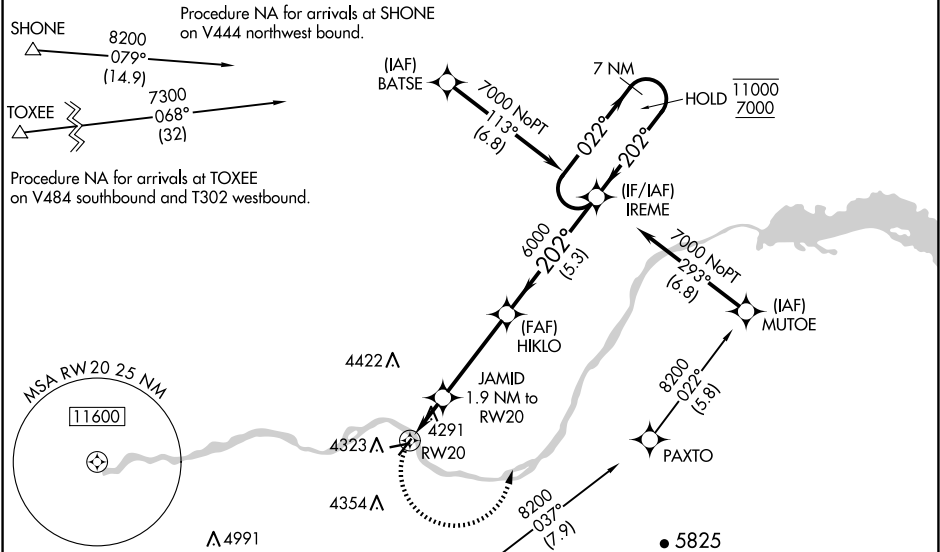
▼

⚠

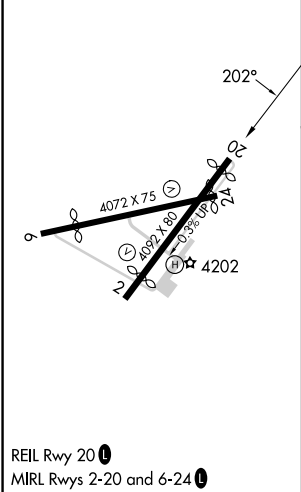
Procedure NA at night. Rwy 20 helicopter visibility reduction below 1 SM NA. When local altimeter setting not received, use TWF altimeter setting and increase all MDAs 80 feet and LNAV visibility Cats C ⅓ SM, and Circling visibility Cat C ¼ SM. Exhaust stacks located along Rwy 20 extended final approach course approximately 2345 feet from approach end. When Circling Rwy 20, exhaust stacks located along Rwy 20 extended final approach course approximately 2345 feet from approach end.

MISSED APPROACH: Climbing left turn to 7000 direct IREME and hold, continue climb-in-hold to 7000.

| | | |
|-----------------|--------------------------------------|----------------|
| ASOS 135.575 | TWIN FALLS APP CON ★ 126.7 353.75 | CTAF 122.90 |
|-----------------|--------------------------------------|----------------|



| | |
|-----------|-----------|
| ELEV 4154 | TDZE 4152 |
|-----------|-----------|



Visual Segment - Obstacles.

| CATEGORY | A | B | C | D |
|----------|-----------------------|-----------------------|--|----|
| LNAV MDA | 4600-1 | 448 (500-1) | 4600-1 $\frac{1}{8}$ 448 (500-1 $\frac{1}{8}$) | NA |
| CIRCLING | 4640-1 486 (500-1) | 4660-1 506 (600-1) | 4740-1 $\frac{1}{2}$ 586 (600-1 $\frac{1}{2}$) | NA |

NW-1, 07 AUG 2025 to 04 SEP 2025

NW-1, 07 AUG 2025 to 04 SEP 2025