

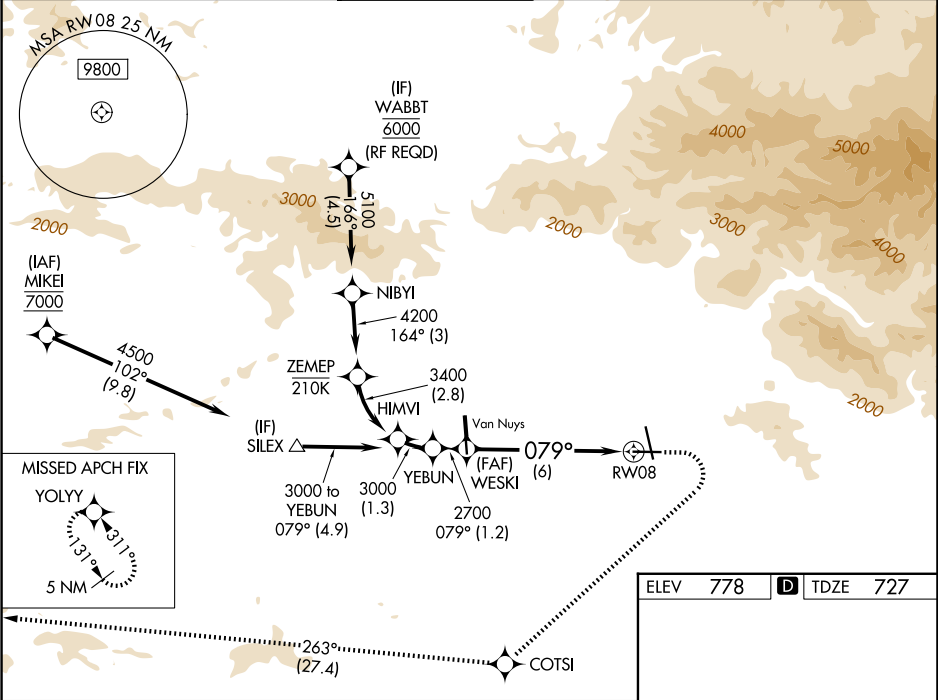
APP CRS	Rwy Ldg	5801
079°	TDZE	727
	Apt Elev	778

RNAV (RNP) Y RWY 8

BOB HOPE (BUR)

RNP AR APCH.	MALSR	MISSED APPROACH: Climb to 1200 then climbing right turn to 4600 direct COTSI and on track 263° to YOLYY and hold. *Missed approach requires minimum climb of 340 feet per NM to 2400. # Missed approach requires minimum climb of 317 feet per NM to 2400.
⚠ For uncompensated Baro-VNAV systems, procedure NA below 1°C or above 54°C. Straight-in Rwy 8 at night, operational VGSi required, remain on or above VGSi glidepath until threshold. Inop table does not apply to RNP 0.20* and RNP 0.30. For inop ALS, increase RNP 0.30* all Cats visibility to 1½ SM.	AS	

D-ATIS	SOCAL APP CON	BURBANK TOWER	GND CON	CLNC DEL	CPDLC
134.5	120.4 360.6 (NORTH) 134.2 338.2 (WEST)	118.7 254.3	123.9 348.6	118.0 348.6	



YEBUN 3000		WESKI 2700		RWY 08	
GP 3.00° TCH 60		See planview for multiple IF locations.		TWR	
1.2 NM		6 NM		5802 X 150	
CATEGORY	A	B	C	D	
RNP 0.20 DA*		1068/50	341 (300-1)		
RNP 0.30 DA#		1151/50	424 (400-1)		
RNP 0.30 DA		1485-2½	758 (800-2½)		
AUTHORIZATION REQUIRED					MIRL Rwy 15-33 HIRL Rwy 8-26 REIL Rwy 15, 26 and 33