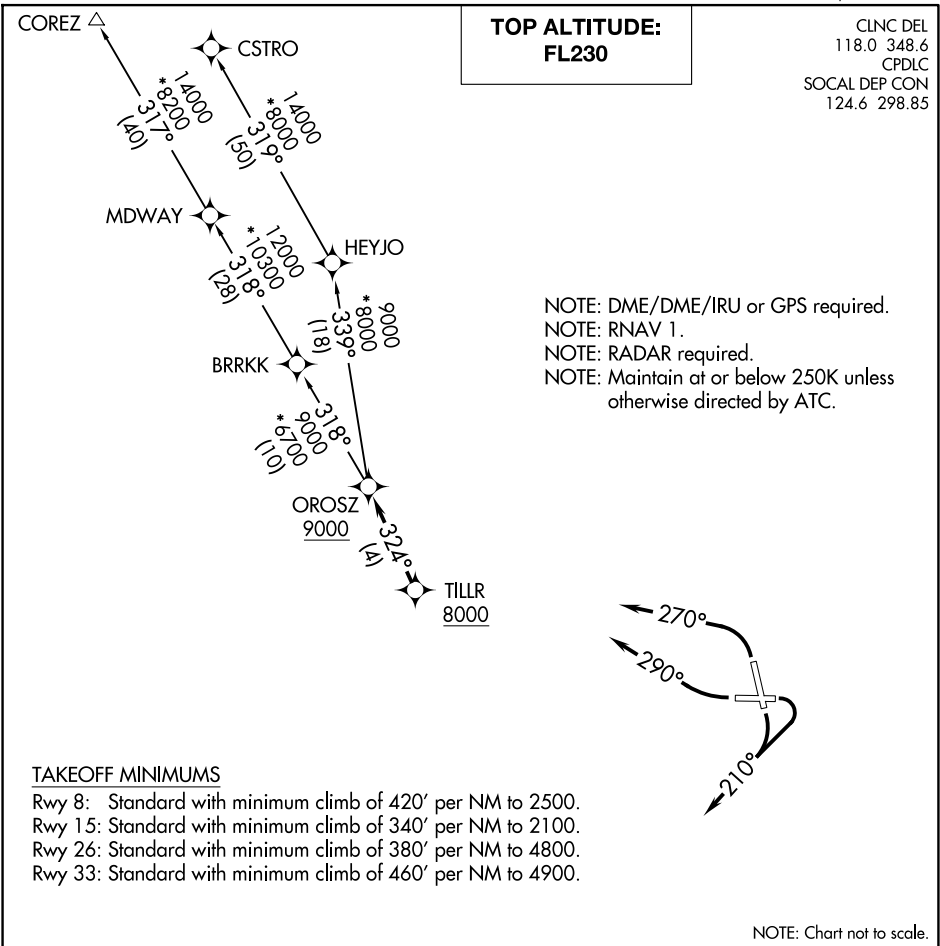


(OROSZ2.ORSZ) 18032  
**ORSZ TWO DEPARTURE (RNAV)**

AL-67 (FAA) **BOB HOPE (BUR)**  
BURBANK, CALIFORNIA



**DEPARTURE ROUTE DESCRIPTION**

TAKEOFF RUNWAYS 8, 15: Climbing right turn heading 210° or as assigned by ATC, expect vectors to cross TILLR at or above 8000, then on track 324° to cross OROSZ at or above 9000, thence. . .

TAKEOFF RUNWAY 26: Climbing right turn heading 290° or as assigned by ATC, expect vectors to cross TILLR at or above 8000, then on track 324° to cross OROSZ at or above 9000, thence. . .

TAKEOFF RUNWAY 33: Climbing left turn heading 270° or as assigned by ATC, expect vectors to cross TILLR at or above 8000, then on track 324° to cross OROSZ at or above 9000, thence. . .

. . . on (transition) maintain FL230. Expect filed altitude 10 minutes after departure.

COREZ TRANSITION (OROSZ2.COREZ)  
CSTRO TRANSITION (OROSZ2.CSTRO)

SW-3, 07 AUG 2025 to 04 SEP 2025

SW-3, 07 AUG 2025 to 04 SEP 2025