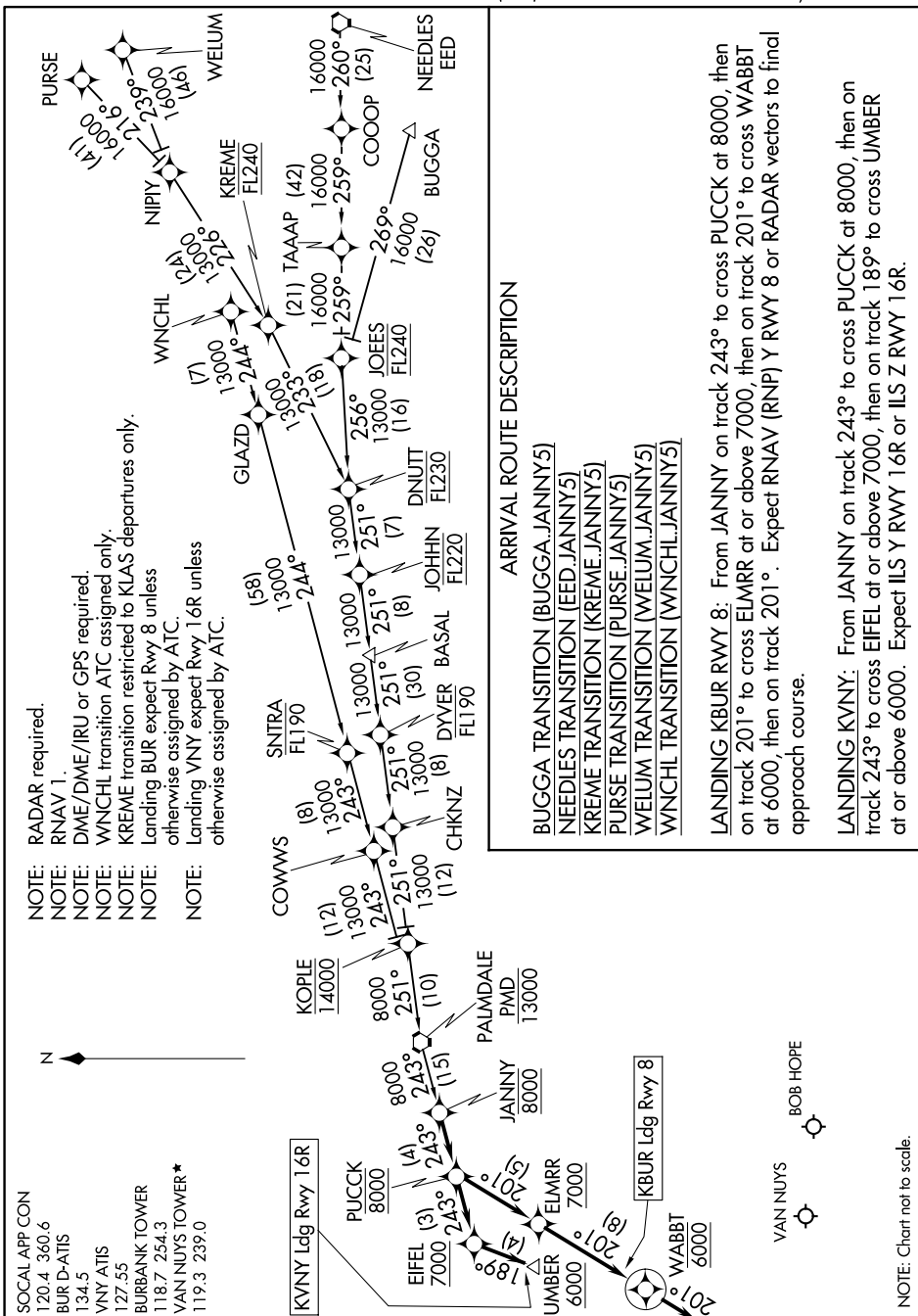


## JANNY FIVE ARRIVAL (RNAV)

AL-67 (FAA)

BURBANK, CALIFORNIA



ARRIVAL ROUTE DESCRIPTION

BUGGA TRANSITION (BUGGA:JANNY5)

NEEDLES TRANSITION (EED:JANNY5)

KREME TRANSITION (KREME:JANNY5)

PURSE TRANSITION (PURSE:JANNY5)

WELUM TRANSITION (WELUM.JANNY5)

WNCHL TRANSITION (WNCHLJANNY5)

LANDING KBUR RWY 8: From JANINY on track 243° to cross PUCCK at 8000, then on track 201° to cross ELMRR at or above 7000, then on track 201° to cross WABBT at 6000, then on track 201°. Expect RNAV (RNP) Y RWY 8 or RADAR vectors to final approach course.

**LANDING KVNY:** From JANNY on track 243° to cross PUCK at 8000, then on track 243° to cross EIFEL at or above 7000, then on track 189° to cross UMBER at or above 6000. Expect ILS Y RWY 16R or ILS Z RWY 16R.

NOTE: Chart not to scale.

SW-3, 07 AUG 2025 to 04 SEP 2025