
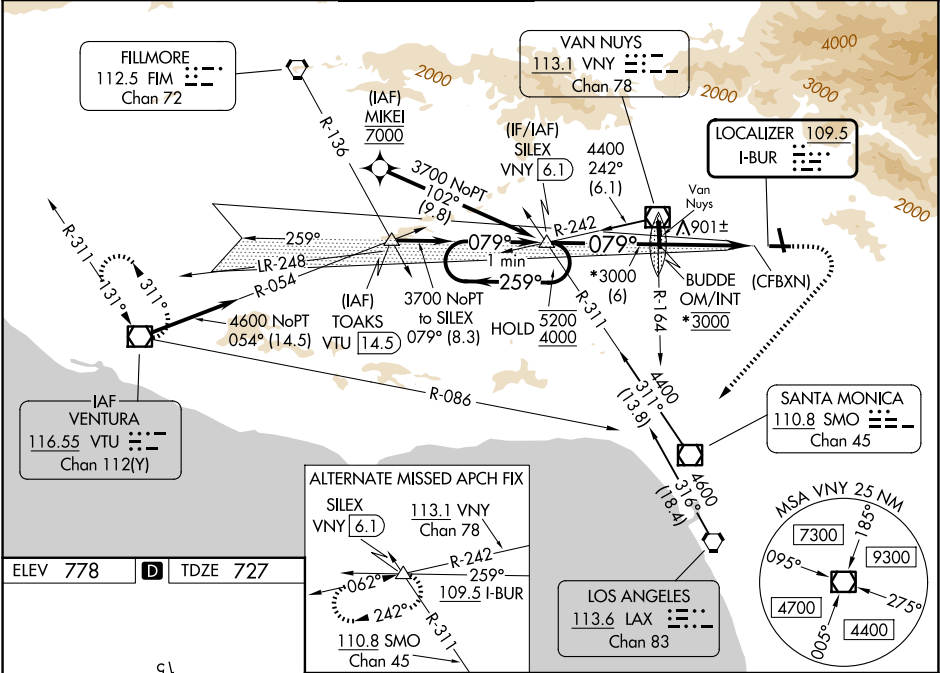


LOC I-BUR <b>109.5</b>	APP CRS <b>079°</b>	Rwy Ldg TDZE Apt Elev <b>5801</b> <b>727</b> <b>778</b>
---------------------------	------------------------	--

ILS Z or LOC Z RWY 8  
BOB HOPE (BUR)

From MIKEI: RNAV 1-GPS required.						
<div>▼ Localizer unusable within 0.9 NM to thld. Straight-in Rwy 8 at night, Circling to Rwy 33 at night, operational VGSi required, remain on or above VGSi glidepath until threshold. Circling Rwy 26 NA at night and Circling Rwy 33 NA at night for Cat D. Circling NA for Cats A/B/C northeast of Rwy 15 and 26. Circling NA for Cat D east of Rwy 15-33. Inop table does not apply to S-ILS 8. For inop ALS, increase S-LOC 8 Cats A/B visibility to RVR 6000 and S-LOC 8 Cats C/D visibility to 1¼ SM. Rwy 8 helicopter visibility reduction below RVR 5000 NA.</div>			<div>MALSR</div> <div></div>		<div>MISSED APPROACH: Climb to 1300 then climbing right turn to 4600 on heading 210° and VTU VOR/DME R-086 to VTU VOR/DME and hold.</div> <div># Missed approach requires a minimum climb of 340 feet per NM to 2520 (if unable to meet climb gradient, see ILS Y or LOC Y RWY 8).</div>	
<div>D-ATIS</div> <div>134.5</div>	<div>SOCAL APP CON</div> <div>120.4 360.6 (NORTH)</div> <div>134.2 338.2 (WEST)</div>	<div>BURBANK TOWER</div> <div>118.7 254.3</div>	<div>GND CON</div> <div>123.9 348.6</div>	<div>CLNC DEL</div> <div>118.0 348.6</div>	<div>CPDLC</div>	



ELEV 778	D	TDZE 727
MIRL Rwy 15-33 HIRL Rwy 8-26 REIL Rws 15, 26 and 33 FAF to MAP 5.2 NM		
Knots	60	90 120 150 180
Min:Sec	5:12	3:28 2:36 2:05 1:44

One Minute Holding Pattern		SILEX VNY 6.1	BUDE OM/INT	VTU R-086
5200	4000	259°	079°	2753
GS 3.00°	TCH 60	3700	3000	*3000
6 NM		5.2 NM	0.9	
CATEGORY	A	B	C	D
S-ILS 8 #	1075/50 348 (300-1)			
S-LOC 8 #	1160/50 433 (400-1)			
CIRCLING	1280-1½ 502 (600-1½)	1640-1¼ 862 (900-1¼)	2240-3 1462 (1500-3)	2320-3 1542 (1600-3)