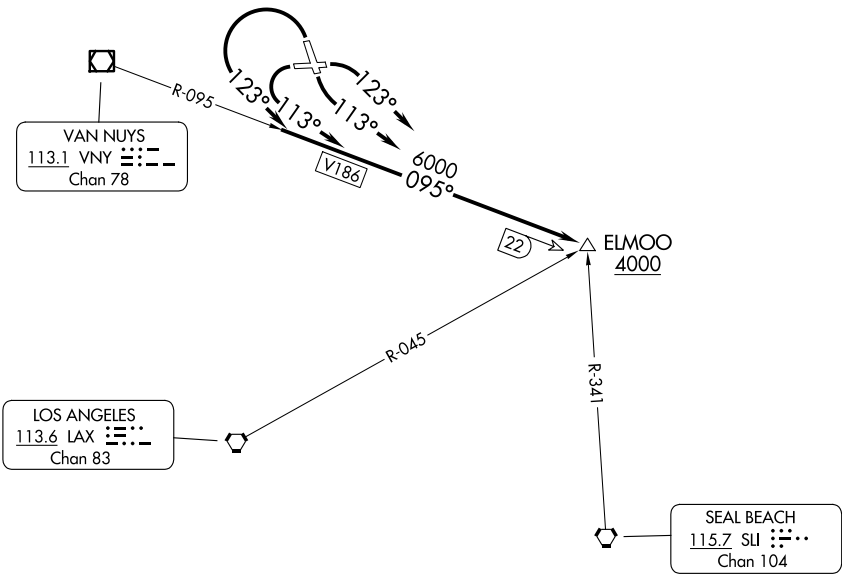


SOCAL DEP CON  
135.05 317.5  
CLNC DEL  
118.0 348.6  
CPDLC

TOP ALTITUDE:  
ASSIGNED BY ATC



TAKEOFF MINIMUMS

- Rwy 8: Standard with minimum climb of 380' per NM to 2500.  
Rwy 15: Standard with minimum climb of 450' per NM to 3000.  
Rwy 26: Standard with minimum climb of 305' per NM to 2600.  
Rwy 33: 600-2¼ with minimum climb of 210' per NM to 4000  
or standard with minimum climb of 450' per NM to 2600.

NOTE: Chart not to scale.

DEPARTURE ROUTE DESCRIPTION

- TAKEOFF RUNWAY 8: Climbing right turn heading 123° intercept VNY VOR/DME  
R-095 to ELMOO. . . .  
TAKEOFF RUNWAY 15: Climbing left turn heading 113° intercept VNY VOR/DME  
R-095 to ELMOO. . . .  
TAKEOFF RUNWAY 26: Climbing left turn heading 113° intercept VNY VOR/DME  
R-095 to ELMOO. . . .  
TAKEOFF RUNWAY 33: Climbing left turn heading 123° intercept VNY VOR/DME  
R-095 to ELMOO. . . .  
... .thence via assigned route. Maintain ATC assigned altitude.