

APP CRS	Rwy Idg	<b>7569</b>
<b>055°</b>	TDZE	<b>708</b>
	Apt Elev	<b>727</b>

RNAV (RNP) Z RWY 5  
BUFFALO NIAGARA INTL (BUF)

**T** For uncompensated Baro-VNAV systems, procedure NA below -18°C (0°F) or above 54°C (130°F). GPS required. For inoperative MALSR, increase RNP 0.10 all Cats visibility to 1¼. For inoperative MALSR, increase RNP 0.30 all Cats visibility to 1%.



**MISSED APPROACH:** Climb to 3000 on the RNAV missed approach route to TRAVA and hold.

D-ATIS  
**135.35**

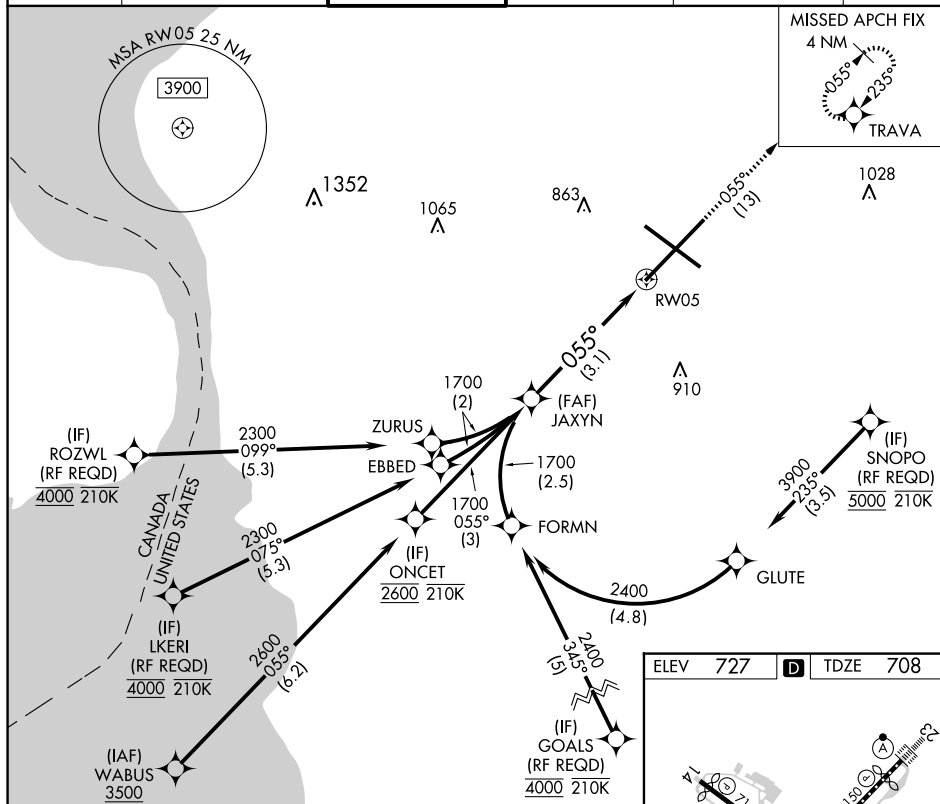
BUFFALO APP CON  
126.15 263.125

BUFFALO TOWER  
120.5 257.8

GND CON  
133.2 257.8

CLNC DEL  
124.7 257.8

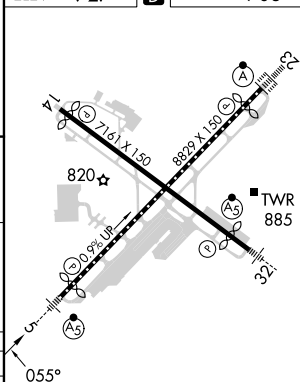
CPDLC



NE-2, 07 AUG 2025 to 04 SEP 2025

NE-2, 07 AUG 2025 to 04 SEP 2025

ELEV	727	<b>D</b>	TDZE	708
------	-----	----------	------	-----



REIL Rwy 14  
TDZ/CL Rwy 5 and 23  
HIRL Rwy 5-23 and 14-32

**AUTHORIZATION REQUIRED**

BUFFALO, NEW YORK

Orig 18SEP14

42°56'N-78°44'W

BUFFALO NIAGARA INTL (BUF)  
RNAV (RNP) Z RWY 5