

BUFFALO, NEW YORK

AL-65 (FAA)

25051

WAAS CH 81811 W32A	APP CRS 318°	Rwy Idg TDZE Apt Elev	6121 713 727
--	------------------------	-----------------------------	---

RNAV (GPS) RWY 32
BUFFALO NIAGARA INTL (BUF)

RNP APCH - GPS

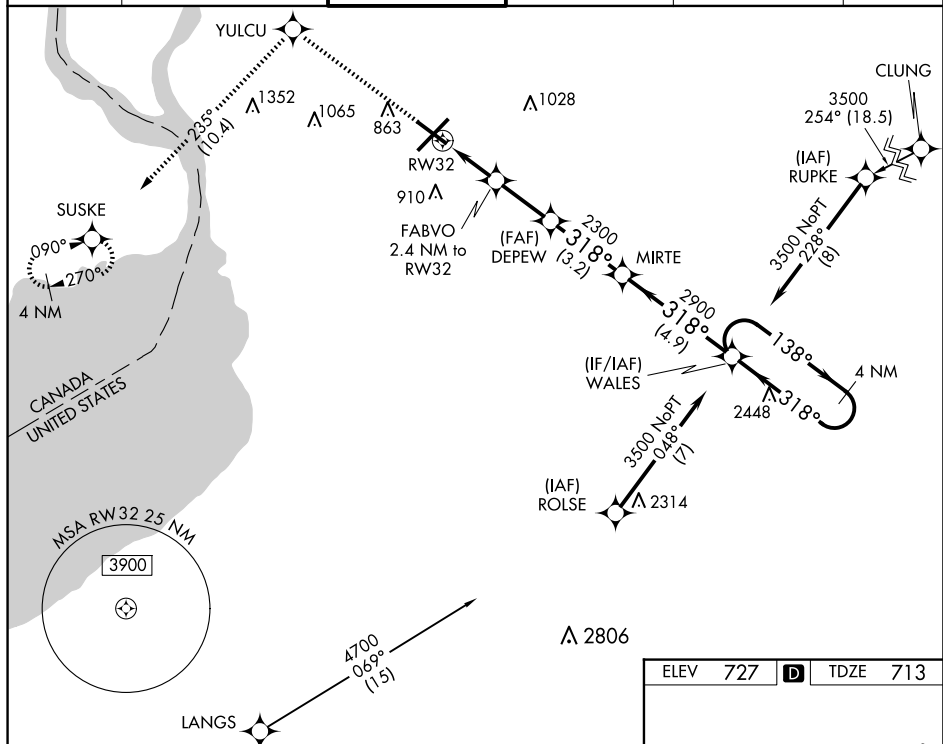
T For uncompensated Baro-VNAV systems LNAV/VNAV NA below -17°C or above 54°C. For inop ALS, increase LNAV/VNAV visibility all Cats to 1 SM. Inop table does not apply to LPV all Cats.

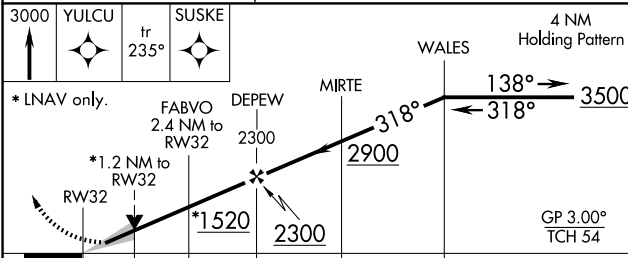
MALSP

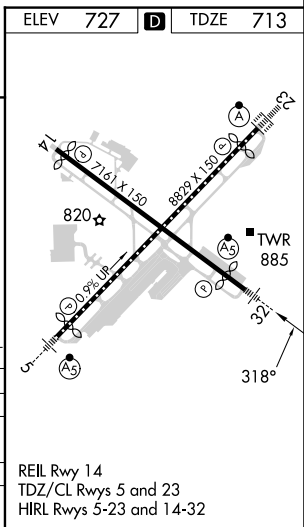
 

MISSED APPROACH:
Climb to 3000 direct
YULCU on track 235°
to SUSKE and hold

D-ATIS	BUFFALO APP CON	BUFFALO TOWER	GND CON	CLNC DEL	CPDLC
135.35	126.15 263.125	120.5 257.8	133.2 257.8	124.7 257.8	



3000 ↑ YULCU	tr 235° SUSKE					
* LNAV only.		4 NM Holding Pattern 3500 138° → ← 318° WALE MIRTE 2900 318° FABVO 2.4 NM to RW32 DEPEW 2300 * 1.2 NM to RW32 RW32 * 1520 2300 GP 3.00° TCH 54 1.2 NM 1.2 NM 2.4 NM 3.2 NM 4.9 NM				
CATEGORY	A		B		C	D
LPV DA	913-1/2 200 (200-1/2)					
LNAV/ VNAV DA	1092-5/8 379 (400-5/8)					
LNAV MDA	1140-1/2 427 (500-1/2)		1140-3/4 427 (500-3/4)			
C CIRCLING	1200-1 473 (500-1)		1220-1 1/2 493 (500-1 1/2) 1340-2 613 (700-2)			



BUFFALO, NEW YORK
 Amdt 2C 02DEC21

42°56'N-78°44'W

BUFFALO NIAGARA INTL (BUF)
RNAV (GPS) RWY 32

NE-2, 07 AUG 2025 to 04 SEP 2025