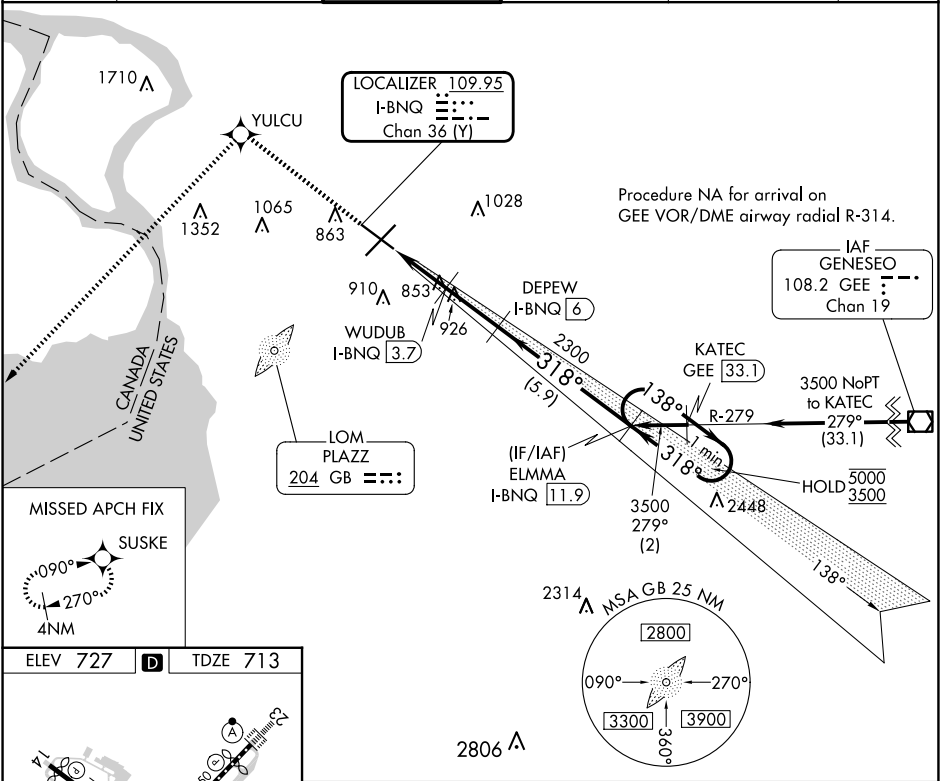


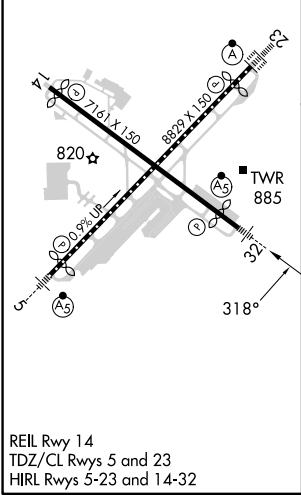
LOC/DME I-BNQ 109.95 Chan 36 (Y)	APP CRS 318°	Rwy Idg TDZE Apt Elev 6121 713 727
--	------------------------	--

ILS or LOC RWY 32
BUFFALO NIAGARA INTL (BUF)

DME required. RNP APCH-GPS.			MALSR 	MISSED APPROACH: Climb to 3000 direct YULCU and on track 235° to SUSKE and hold.	
D-ATIS 135.35	BUFFALO APP CON 126.15 263.125	BUFFALO TOWER 120.5 257.8	GND CON 133.2 257.8	CLNC DEL 124.7 257.8	CPDLC



ELEV 727	TDZE 713
----------	----------



3000 ↑	YULCU ✧	tr 235° ✧	SUSKE ✧	DEPEW I-BNQ 6	ELMMA I-BNQ 11.9	One Minute Holding Pattern																								
<table><tr><td>CATEGORY</td><td colspan="2">A</td><td>B</td><td>C</td><td>D</td></tr><tr><td>S-ILS 32</td><td colspan="5">913-1/2 200 (200-1/2)</td></tr><tr><td>S-LOC 32</td><td colspan="2">1120-1/2 407 (400-1/2)</td><td colspan="3">1120-3/4 407 (400-3/4)</td></tr><tr><td>CIRCLING</td><td colspan="2">1200-1 473 (500-1)</td><td colspan="2">1220-1 1/2 493 (500-1 1/2)</td><td>1340-2 613 (700-2)</td></tr></table>							CATEGORY	A		B	C	D	S-ILS 32	913-1/2 200 (200-1/2)					S-LOC 32	1120-1/2 407 (400-1/2)		1120-3/4 407 (400-3/4)			CIRCLING	1200-1 473 (500-1)		1220-1 1/2 493 (500-1 1/2)		1340-2 613 (700-2)
CATEGORY	A		B	C	D																									
S-ILS 32	913-1/2 200 (200-1/2)																													
S-LOC 32	1120-1/2 407 (400-1/2)		1120-3/4 407 (400-3/4)																											
CIRCLING	1200-1 473 (500-1)		1220-1 1/2 493 (500-1 1/2)		1340-2 613 (700-2)																									
I-BNQ 1.2 I-BNQ 2.3 WUDUB I-BNQ 3.7 2300 1540 2300 138° → 5000 ← 318° 3500 GS 3.00° TCH 54																														
1.1 NM 1.4 NM 2.3 NM 5.9 NM																														
CATEGORY	A		B	C	D																									
S-ILS 32	913-1/2 200 (200-1/2)																													
S-LOC 32	1120-1/2 407 (400-1/2)			1120-3/4 407 (400-3/4)																										
CIRCLING	1200-1 473 (500-1)		1220-1 1/2 493 (500-1 1/2)		1340-2 613 (700-2)																									

NE-2, 07 AUG 2025 to 04 SEP 2025

NE-2, 07 AUG 2025 to 04 SEP 2025