

WAAS CH 65843 W31A	APP CRS 312°	Rwy Idg TDZE 20 Apt Elev 22	7399
--	------------------------	---	-------------

RNAV (GPS) RWY 31

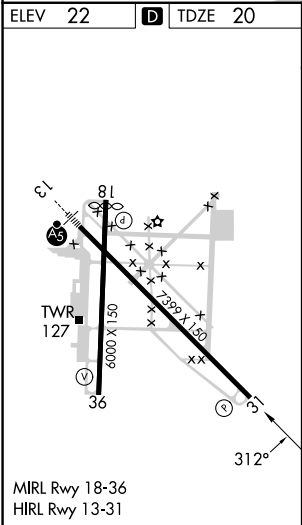
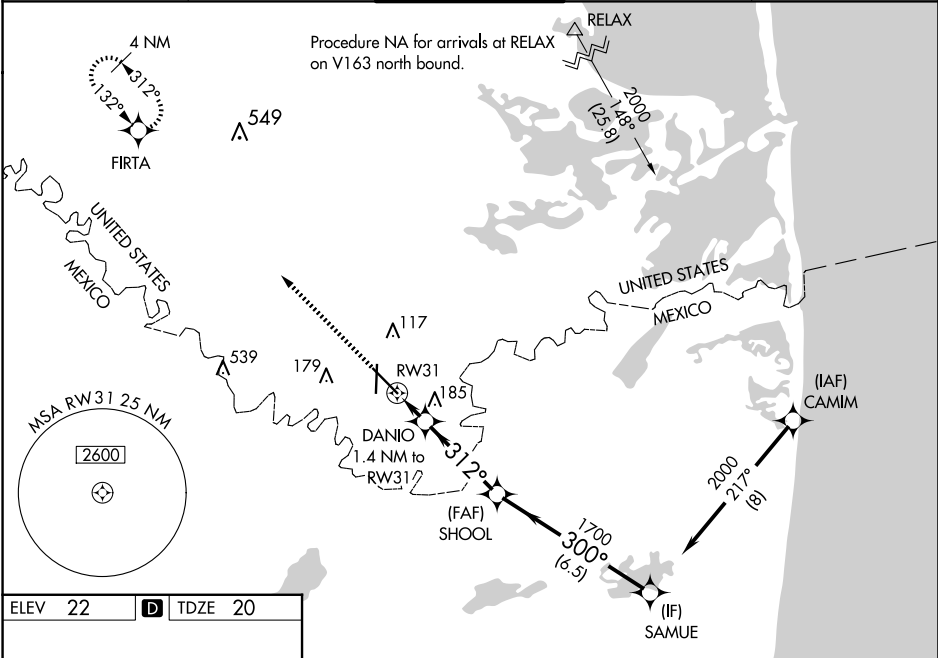
BROWNSVILLE/SOUTH PADRE ISLAND INTL (BRO)

RNP APCH - GPS.

Rwy 31 helicopter visibility reduction below ¾ SM NA. Circling Rwy 18 NA at night. For uncompensated Baro-VNAV systems, LNAV/VNAV NA below 1° C or above 54° C.

MISSED APPROACH: Climb to 2000 direct FIRTA and hold.

ATIS 128.55	VALLEY APP CON 119.5 257.6	BROWNSVILLE TOWER* 118.9(CTAF) 239.3	GND CON 121.9	UNICOM 122.95
-----------------------	--------------------------------------	---	-------------------------	-------------------------



2000	FIRTA	VGSI and RNAV glidepath not coincident (VGSI Angle 3.00/TCH 68).			
		DANIO 1.4 NM to RW31	SHOOL 1700	SAMUE 2000	
		0.9 NM to RW31	312°	300°	GP 3.00° TCH 60
		520	1700		
		0.9 0.5 3.7 NM 6.5 NM			
CATEGORY	A	B	C	D	
LPV DA	270-¾ 250 (300-¾)				
LNAV/VNAV DA	270-¾ 250 (300-¾)				
LNAV MDA	380-1 360 (400-1)				
CIRCLING	440-1 418 (500-1)	500-1 478 (500-1)	540-1½ 518 (600-1½)	680-2 658 (700-2)	