

APP CRS	Rwy Ldg	8994
318°	TDZE	4462
	Apt Elev	4473

RNAV (GPS) Y RWY 30
BOZEMAN YELLOWSTONE INTL (BZN)

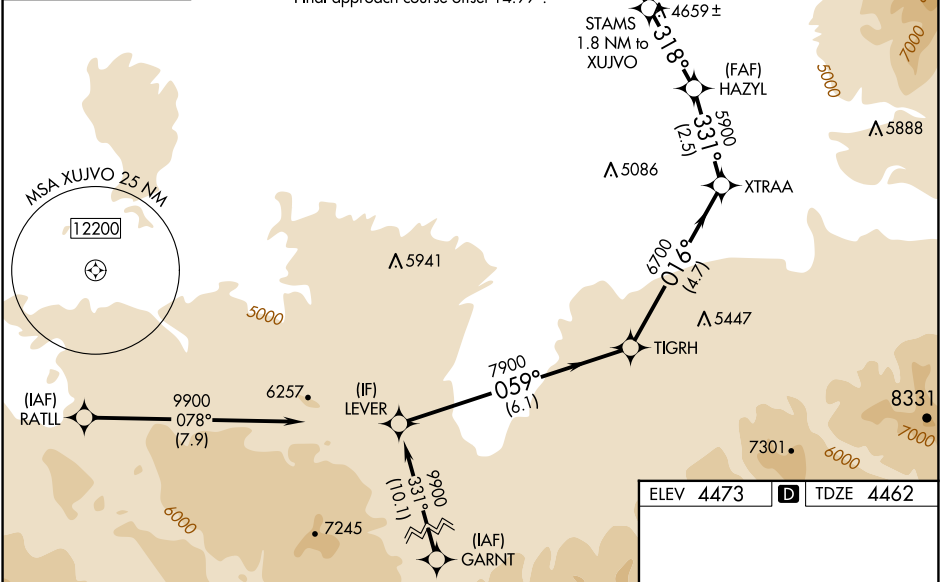
RNP APCH - GPS.		
For uncompensated Baro-VNAV systems, LNAV/VNAV NA below -30°C or above 54°C. Circling NA to Rwy's 3, 11, 21 and 29.		
-22°C		

MISSED APPROACH: Climb to 5000 then climbing left turn to 10000 direct THESE and hold, continue climb-in-hold to 10000.

ATIS	BIG SKY APP CON★	BOZEMAN TOWER★	GND CON	CLNC DEL	UNICOM
135.425	118.975 226.675	118.2 (CTAF) 0	121.8	124.05	122.95

MISSED APCH FIX

095°
7 NM
THESE



5000		10000		THESE	
↑		↖		△	
XUJVO		HAZYL		TIGRH	
STAMS 1.8 NM to XUJVO		XTRAA		LEVER	
1.2 NM to XUJVO		5900		9900	
5120		5900		7900	
1.2 NM		0.6		GP 3.20°	
2.3 NM		2.5 NM		TCH 45	
4.7 NM		6.1 NM			
CATEGORY	A	B	C	D	
LNAV/VNAV DA	4880-1½ 418 (500-1½)				
LNAV MDA	4880-1 418 (500-1)				
CIRCLING	4940-1 467 (500-1)	4960-1 487 (500-1)	5160-2 687 (700-2)	5320-2¾ 847 (900-2¾)	

ELEV 4473 D TDZE 4462

Rwy 11G-29G: 2802 X 80

TWR

REIL Rwy 30 0

HIRL Rwy 12-30 0

MIRL Rwy 11-29 0