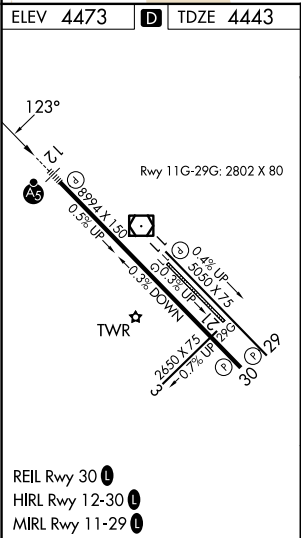
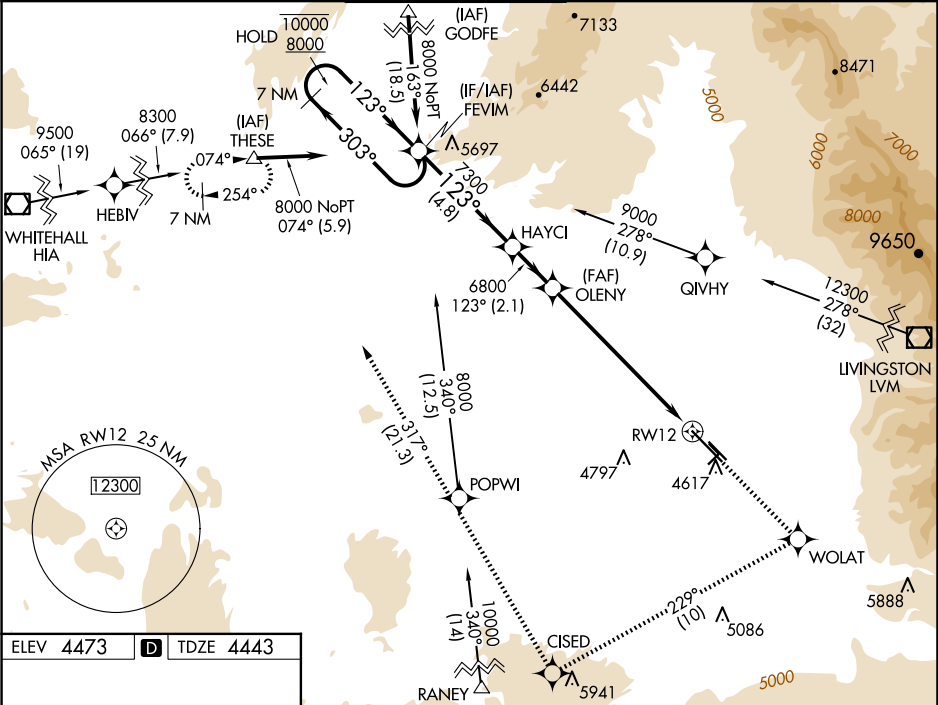


WAAS CH 72816 W12A	APP CRS 123°	Rwy Ldg TDZE Apt Elev	8994 4443 4473
--	------------------------	-----------------------------	---

RNAV (GPS) Y RWY 12

BOZEMAN YELLOWSTONE INTL (BZN)

RNP APCH.				MALSR	MISSED APPROACH: Climb to 8300 direct WOLAT and right turn on track 229° to CISED and on track 317° to THESE and hold.	
Circling NA to Rwys 3-21 and 11-29. For uncompensated Baro-VNAV systems, procedure NA below -23°C or above 49°C. For inop ALS, increase -22°C LNAV/VNAV visibility to 1½ SM and LNAV visibility Cats C and D to 1½ SM.				AS		
ATIS 135.425	BIG SKY APP CON★ 118.975 226.675	BOZEMAN TOWER★ 118.2 (CTAF) 0	GND CON 121.8	CLNC DEL 124.05	UNICOM 122.95	



7 NM Holding Pattern		8300	WOLAT	CISED	THESE
10000 8000		↑	✧	tr 229°	tr 317°
GP 3.00° TCH 53		* LNAV only			
123°		*1.5 NM to RWY12			
7300		RWY12			
6800		RWY12			
4.8 NM		2.1 NM	5.7 NM	1.5 NM	
CATEGORY	A	B	C	D	
LPV DA	4693-½		250 (300-½)		
LNAV/VNAV DA	5094-1¾		651 (700-1¾)		
LNAV MDA	4960-½	517 (500-½)	4960-1	517 (500-1)	4960-1¼
CIRCLING	4960-1	487 (500-1)	5160-2	5360-3	887 (900-3)