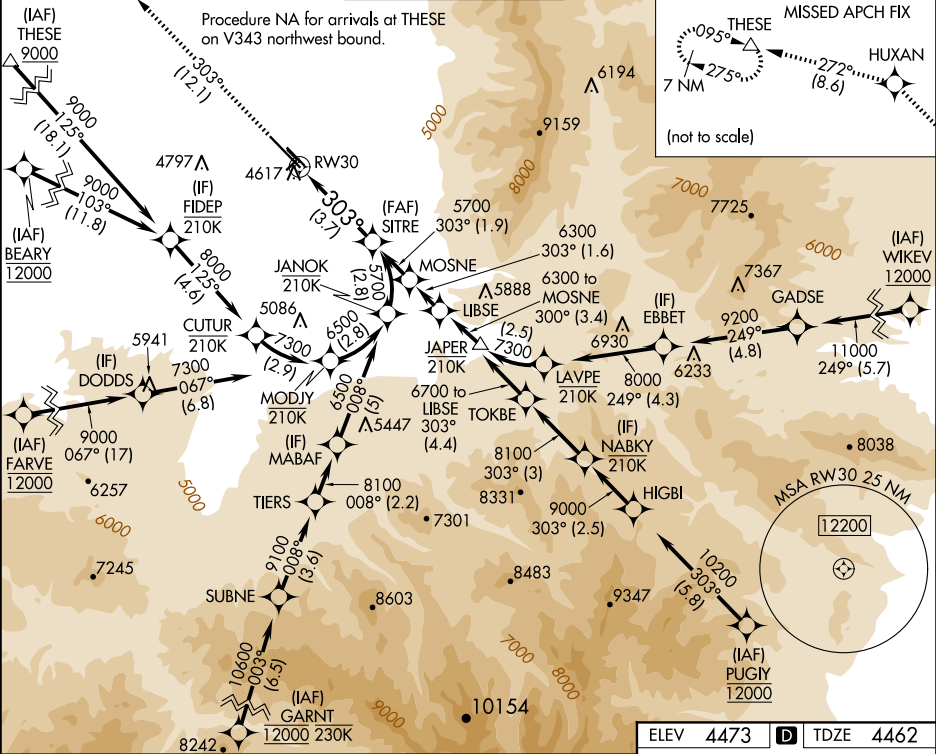


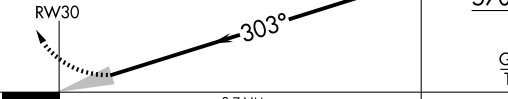
APP CRS	Rwy Ldg	8994
303°	TDZE	4462
	Apt Elev	4473

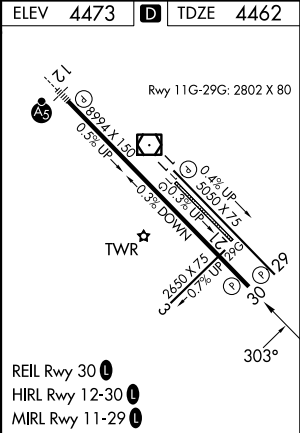
RNAV (RNP) Z RWY 30  
BOZEMAN YELLOWSTONE INTL (BZN)

RNP AR APCH - GPS.	MISSED APPROACH: Climb to 10000 on track 303° to HUXAN and on track 272° to THESE and hold, continue climb-in-hold to 10000.
For uncompensated Baro-VNAV systems, procedure NA below -27°C or above 54°C. When local alimeter setting not received, procedure NA.	

ATIS 135.425	BIG SKY APP CON★ 118.975 226.675	BOZEMAN TOWER★ 118.2 (CTAF) 0	GND CON 121.8	CLNC DEL 124.05	UNICOM 122.95
-----------------	-------------------------------------	----------------------------------	------------------	--------------------	------------------



10000 ↑ tr 303°	HUXAN ★	tr 272° △	THESE	SITRE 5700
See planview for multiple IF locations.				
				
CATEGORY	A	B	C	D
RNP 0.11 DA	4806-1 344 (400-1)			
RNP 0.30 DA	4885-1¼ 423 (500-1¼)			
AUTHORIZATION REQUIRED				



NW-1, 07 AUG 2025 to 04 SEP 2025

NW-1, 07 AUG 2025 to 04 SEP 2025