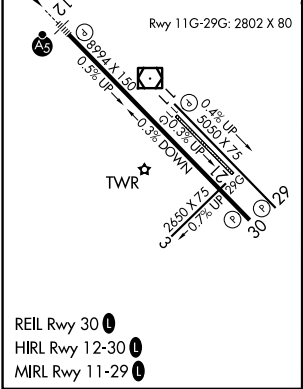
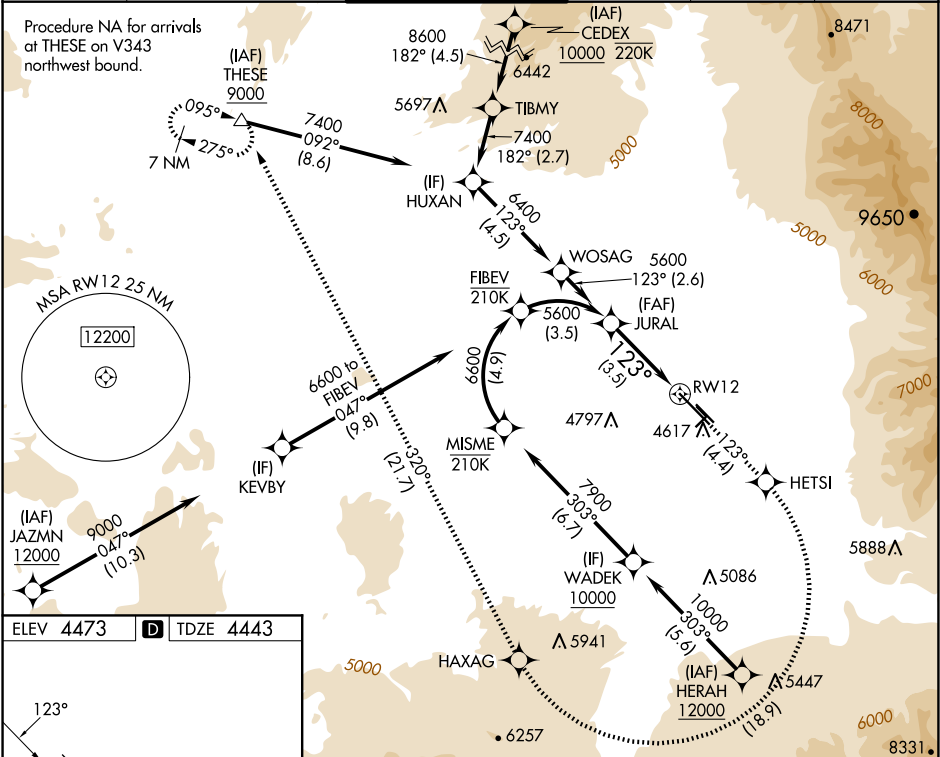


APP CRS	Rwy Ldg	8994
123°	TDZE	4443
	Apt Elev	4473

RNAV (RNP) Z RWY 12
BOZEMAN YELLOWSTONE INTL (BZN)

RNP AR APCH - GPS.	MALSR	MISSED APPROACH: Climb to 10000 on track 123° to HETSI, and right turn to HAXAG, and on track 320° to THESE and hold.
▼ -22°C	AS	
For uncompensated Baro-VNAV systems, procedure NA below -29°C or above 54°C. When local altimeter setting not received, procedure NA. For inop ALS, increase RNP 0.10 visibility to 7/8 SM and RNP 0.30 visibility to 1 SM.		

ATIS 135.425	BIG SKY APP CON★ 118.975 226.675	BOZEMAN TOWER★ 118.2 (CTAF) 0	GND CON 121.8	CLNC DEL 124.05	UNICOM 122.95
-----------------	-------------------------------------	----------------------------------	------------------	--------------------	------------------



JURAL	10000	HETSI	HAXAG	tr 320°	THESE
5600	tr 123°				
See planview for multiple IF locations.					
GP 3.00°					
TCH 53					
3.5 NM					
CATEGORY	A	B	C	D	
RNP 0.10 DA		4723-1/2	280 (300-1/2)		
RNP 0.30 DA		4795-5/8	352 (400-5/8)		
AUTHORIZATION REQUIRED					

NW-1, 07 AUG 2025 to 04 SEP 2025

NW-1, 07 AUG 2025 to 04 SEP 2025