

BOZEMAN, MONTANA

AL-59 (FAA)

25163

APP CRS <b>303°</b>	Rwy Ldg TDZE Apt Elev	<b>N/A</b> <b>N/A</b> <b>4473</b>
------------------------	-----------------------------	---

RNAV (GPS)-A  
BOZEMAN YELLOWSTONE INTL (BZN)

RNP APCH.

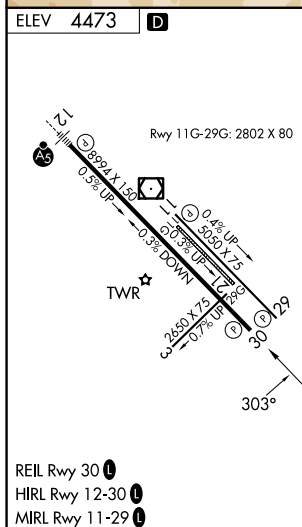
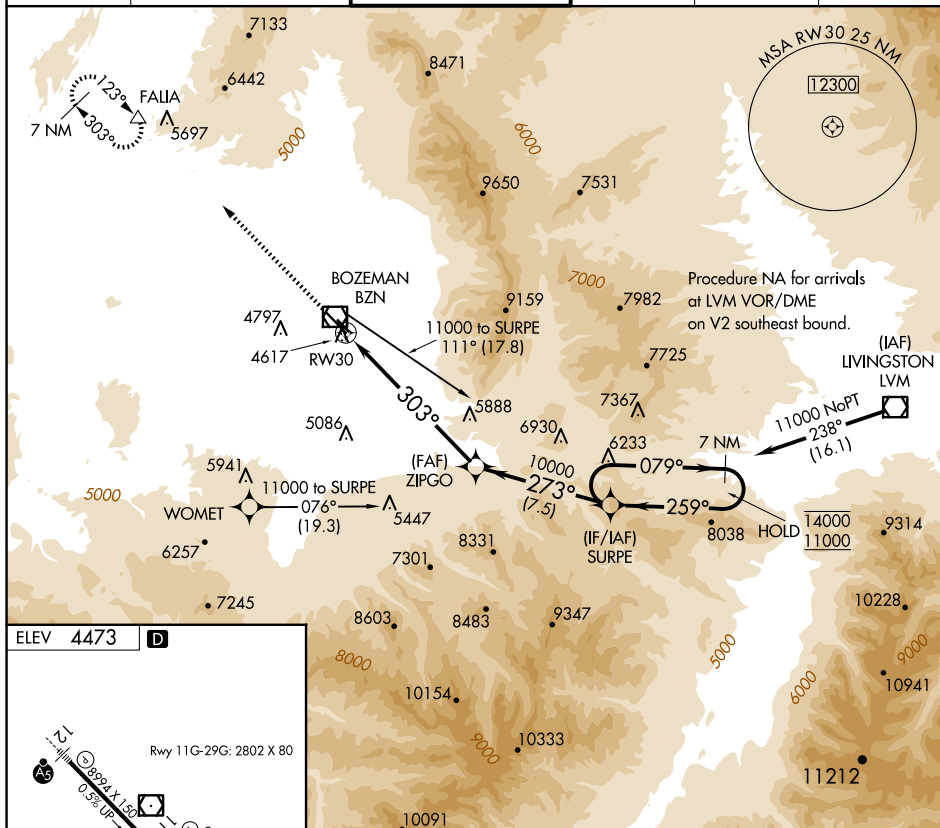
<div style="display: flex; flex-direction: column; align-items: center;"> <div style="background-color: black; color: white; padding: 5px; margin-bottom: 5px;">T</div> <div style="background-color: black; color: white; padding: 5px;">A</div> </div>
--

Circling NA to Rwy 3-21 and 11-29.

 -22°C

**MISSED APPROACH:** Climb to 10000 direct FALIA and hold, continue climb-in-hold to 10000.

ATIS <b>135.425</b>	BIG SKY APP CON★ <b>118.975 226.675</b>	BOZEMAN TOWER★ <b>118.2 (CTAF) 0</b>	GND CON <b>121.8</b>	CLNC DEL <b>124.05</b>	UNICOM <b>122.95</b>
------------------------	--	---	-------------------------	---------------------------	-------------------------

[illegible]

BOZEMAN, MONTANA  
Amdt 2C 03JAN19

BOZEMAN YELLOWSTONE INTL (BZN)  
RNAV (GPS)-A

45°47'N-111°09'W

NW-1, 07 AUG 2025 to 04 SEP 2025

NW-1, 07 AUG 2025 to 04 SEP 2025