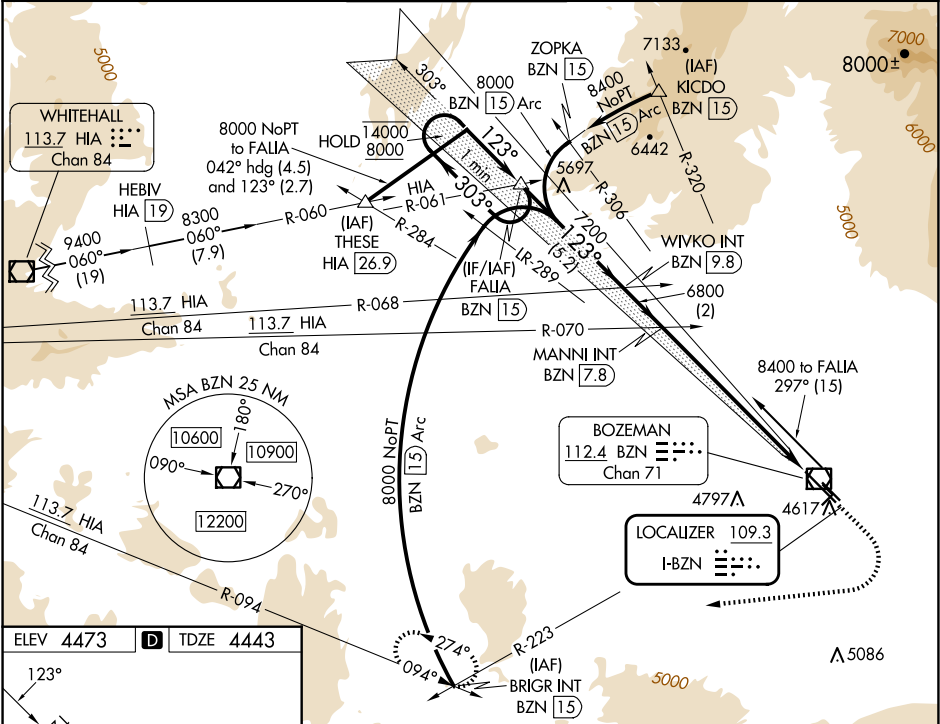


LOC I-BZN 109.3	APP CRS 123°	Rwy Ldg TDZE 8994 4443 Apt Elev 4473
---------------------------	------------------------	--------------------------------------------------------------------

ILS or LOC RWY 12
BOZEMAN YELLOWSTONE INTL (BZN)

RADAR required for procedure entry at BRIGR INT.	MALSR	MISSED APPROACH: Climb to 5200 then climbing right turn to 9000 on heading 250° and on BZN VOR/DME R-223 to BRIGR INT/BZN 15 DME and hold. Continue climb-in-hold to 9000.
 Circling NA to Rwy's 3-21 and 11-29. DME from BZN VOR/DME. DME use requires simultaneous reception of I-BZN and BZN DME. For inop ALS, increase S-LOC 12 Cat C/D visibility to 2 SM.		

ATIS 135.425	BIG SKY APP CON★ 118.975 226.675	BOZEMAN TOWER★ 118.2 (CTAF) 0	GND CON 121.8	CLNC DEL 124.05	UNICOM 122.95
------------------------	--------------------------------------------	-----------------------------------------	-------------------------	---------------------------	-------------------------



ELEV 4473		TDZE 4443
Rwy 11G-29G: 2802 X 80		
 Rwy 11G-29G: 2802 X 80 0.5% UP 0.3% DOWN TWR		
REIL Rwy 30		
HIRL Rwy 12-30		
MIRL Rwy 11-29		
FAF to MAP 7.3 NM		
Knots	60	90 120 150 180
Min:Sec	7:18	4:52 3:39 2:55 2:26

One Minute Holding Pattern	FALIA BZN [15]	WIVKO INT BZN [9.8]	MANNI INT BZN [7.8]	BZN [2.6]	BZN [0.5]
14000	8000	7200	6800	6800	6800
GS 3.00°	TCH 53	5.2 NM	2 NM	5.2 NM	2.1 NM
CATEGORY	A	B	C	D	
S-ILS 12	4643-1/2 200 (200-1/2)				
S-LOC 12	5160-1/2 717 (700-1/2)		5160-1 5/8 717 (700-1 5/8)		
CIRCLING	5160-1 687 (700-1)		5160-2 687 (700-2)		5360-3 887 (900-3)

NW-1, 07 AUG 2025 to 04 SEP 2025

NW-1, 07 AUG 2025 to 04 SEP 2025