

WAAS  
CH **69525**  
**W33A**

APP CRS  
**330°**

Rwy Idg  
TDZE **16**  
Apt Elev **19**

**10083**

**RNAV (GPS) Z RWY 33L**

GENERAL EDWARD LAWRENCE LOGAN INTL (BOS)

RNP APCH - GPS.

▼

For uncompensated Baro-VNAV systems, LNAV/VNAV NA below -14°C or above 54°C.

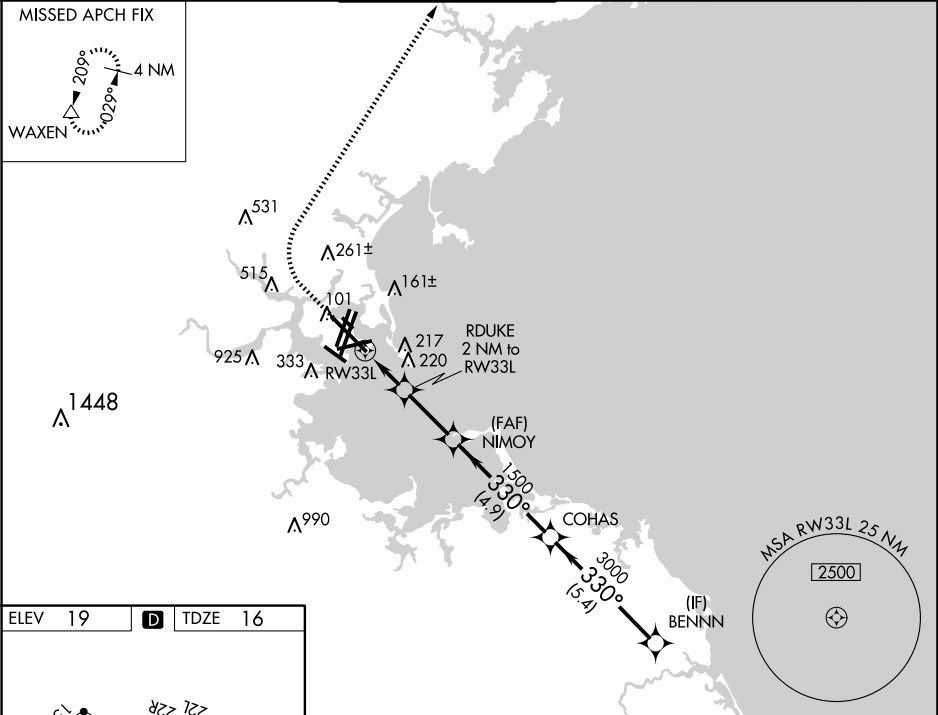
ALSF-2

▲

▮

MISSED APPROACH: Climb to 600 then climbing right turn to 3000 direct WAXEN and hold.

D-ATIS <b>135.0</b>	BOSTON APP CON <b>120.6 263.1</b>	BOSTON TOWER <b>128.8 257.8 (WEST)</b> <b>132.225 257.8 (EAST)</b>	GND CON <b>121.75 121.9</b>	CLNC DEL <b>121.65 257.8</b>	CPDLC
------------------------	--------------------------------------	--	--------------------------------	---------------------------------	-------



ELEV 19    **D**    TDZE 16

TDZ/CL Rwys 4R, 15R and 33L  
REIL Rwys 4L, 27 and 32  
MRL Rwy 15L-33R  
HIRL Rwys 4L-22R, 4R-22L, 9-27, 14-32 and 15R-33L

600	3000	WAXEN	VGSI and RNAV glidepath not coincident (VGSI Angle 3.00/TCH 68).			
<div>▲</div>	<div>▲</div>	<div>▲</div>				
CATEGORY	A	B	C	D		
LPV DA	216/18		200 (200-½)			
LNAV/VNAV DA	324/24		308 (400-½)			
LNAV MDA	440/24		424 (500-½)		440/40	424 (500-¾)