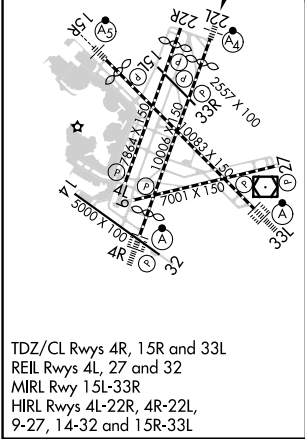
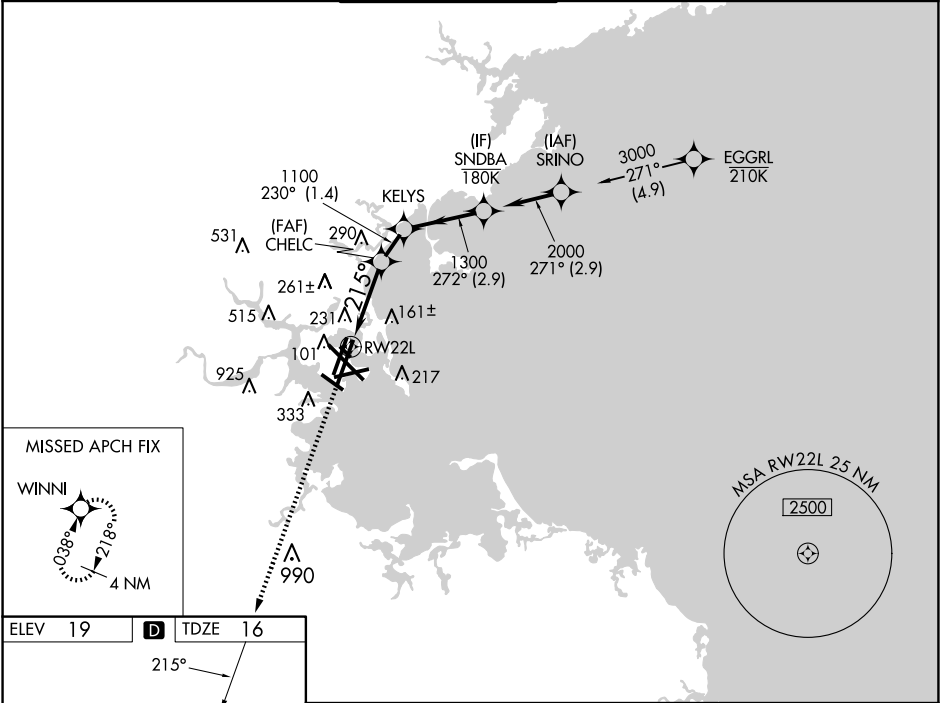


WAAS CH 77645 W22B	APP CRS 215°	Rwy Idg TDZE 16 Apt Elev 19	8806
--	------------------------	---	-------------

RNAV (GPS) Y RWY 22L

GENERAL EDWARD LAWRENCE LOGAN INTL (BOS)

RNP APCH - GPS. ▼ For uncompensated Baro-VNAV systems, LNAV/VNAV NA below -14°C or above 54°C. Inop table does not apply to LPV all Cats.			MALSF ⬆️	MISSED APPROACH: Climb to 3000 direct WINNI and hold.	
D-ATIS 135.0	BOSTON APP CON 120.6 263.1	BOSTON TOWER 128.8 257.8 (WEST) 132.225 257.8 (EAST)	GND CON 121.75 121.9	CLNC DEL 121.65 257.8	CPDLC



3000 WINNI		VGSi and RNAV glidepath not coincident (VGSi Angle 3.00°/TCH 71°).			
↑		↑			
RW22L		RW22L			
1.3 NM		1.3 NM			
1.9 NM		1.9 NM			
1.4 NM		1.4 NM			
2.9 NM		2.9 NM			
CATEGORY	A	B	C	D	
LPV DA	216/40	200 (200-¾)			
LNAV/VNAV DA	408/45	392 (400-⅞)			
LNAV MDA	500/40	484 (500-¾)	500/60	484 (500-1¼)	