

BOSTON, MASSACHUSETTS

AL-58 (FAA)

24193

WAAS CH <b>45925</b> <b>W22A</b>	APP CRS <b>215°</b>	Rwy Idg <b>8806</b> TDZE <b>16</b> Apt Elev <b>19</b>
--	------------------------	---

## RNAV (GPS) X RWY 22L

GENERAL EDWARD LAWRENCE LOGAN INTL (BOS)

RNP APCH - GPS.

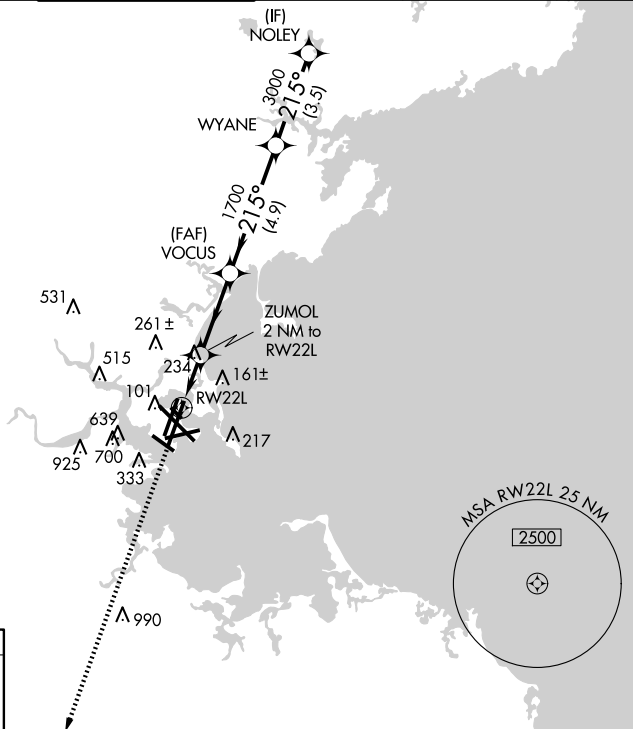
**T** For inop ALS, increase LNAV/VNAV Cat D visibility to RVR 6000 and LNAV Cat D visibility to 1½ SM. For uncompensated Baro-VNAV systems, LNAV/VNAV NA below -13°C or above 43°C.

MALSF



**MISSED APPROACH:**  
Climb to 3000 direct  
WINNI and hold.

D-ATIS 135.0	BOSTON APP CON 120.6 263.1	BOSTON TOWER 128.8 257.8 (WEST) 132.225 257.8 (EAST)	GND CON 121.75 121.9	CLNC DEL 121.65 257.8	CPDLC
-----------------	-------------------------------	--	-------------------------	--------------------------	-------

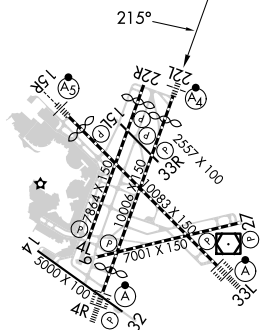


MISSED APCH FIX

WINNI

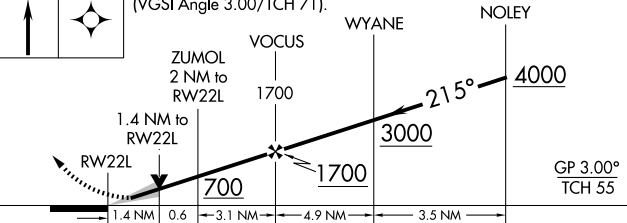
A 1447

ELEV 19	<b>D</b>	TDZE 16
---------	----------	---------



TDZ/CL Rwy 4R, 15R and 33L  
REIL Rwy 4L, 27 and 32  
MIRL Rwy 15L-33R  
HIRL Rwy 4L-22R, 4R-22L,  
9-27, 14-32 and 15R-33L

3000	WINNI	VGSI and RNAV glidepath not coincident (VGSI Angle 3.00/TCH 71).
------	-------	--



CATEGORY	A	B	C	D
LPV DA	216/40		200 (200-3/4)	
INAV/ VNAV DA	408/50		392 (400-1)	
INAV MDA	540/40	524 (600-3/4)	540-1 1/4	524 (600-1 1/4)

BOSTON, MASSACHUSETTS

Amdt 1F 13JUN24

GENERAL EDWARD LAWRENCE LOGAN INTL (BOS)

42°22'N-71°00'W

## RNAV (GPS) X RWY 22L

NE-1, 07 AUG 2025 to 04 SEP 2025