

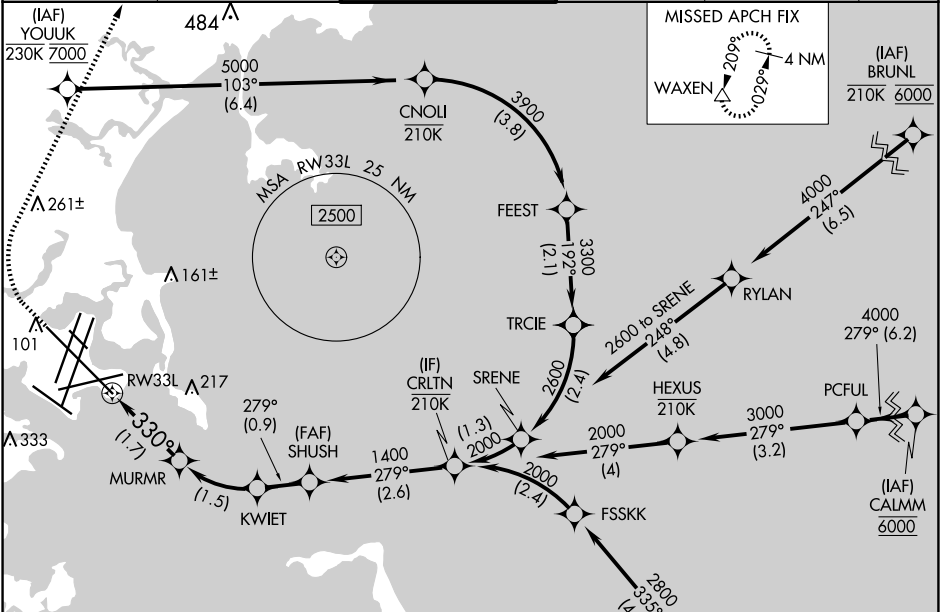
APP CRS	Rwy Idg	10083
330°	TDZE	16
	Apt Elev	19

RNAV (RNP) X RWY 33L

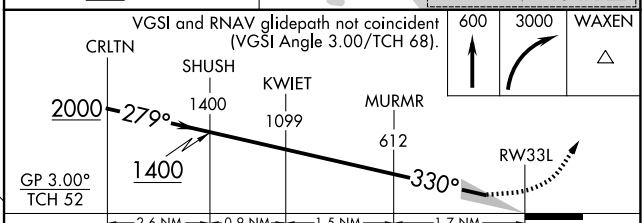
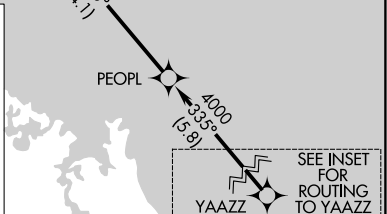
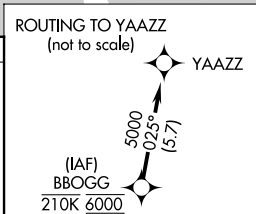
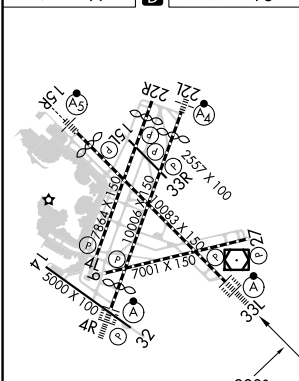
GENERAL EDWARD LAWRENCE LOGAN INTL (BOS)

RNP AR APCH. RF required.		ALSF-2	MISSED APPROACH: Climb to 600 then climbing right turn to 3000 direct WAXEN and hold.
NA For uncompensated Baro-VNAV systems, procedure NA below -14°C or above 54°C. For inop ALS, increase RNP 0.30 all Cts visibility to RVR 4000.			

D-ATIS	BOSTON APP CON	BOSTON TOWER	GND CON	CLNC DEL	CPDLC
135.0	120.6 263.1	128.8 257.8 (WEST) 132.225 257.8 (EAST)	121.75 121.9	121.65 257.8	



ELEV	19	TDZE	16
------	-----------	------	-----------



CATEGORY	A	B	C	D
RNP 0.30 DA	273/24 257 (300-1/2)			

AUTHORIZATION REQUIRED

NE-1, 07 AUG 2025 to 04 SEP 2025

NE-1, 07 AUG 2025 to 04 SEP 2025