

WAAS CH 50124 W04A	APP CRS 035°	Rwy Idg 8851 TDZE 18 Apt Elev 19
--	------------------------	---

RNAV (GPS) RWY 4R

GENERAL EDWARD LAWRENCE LOGAN INTL (BOS)

RNP APCH - GPS

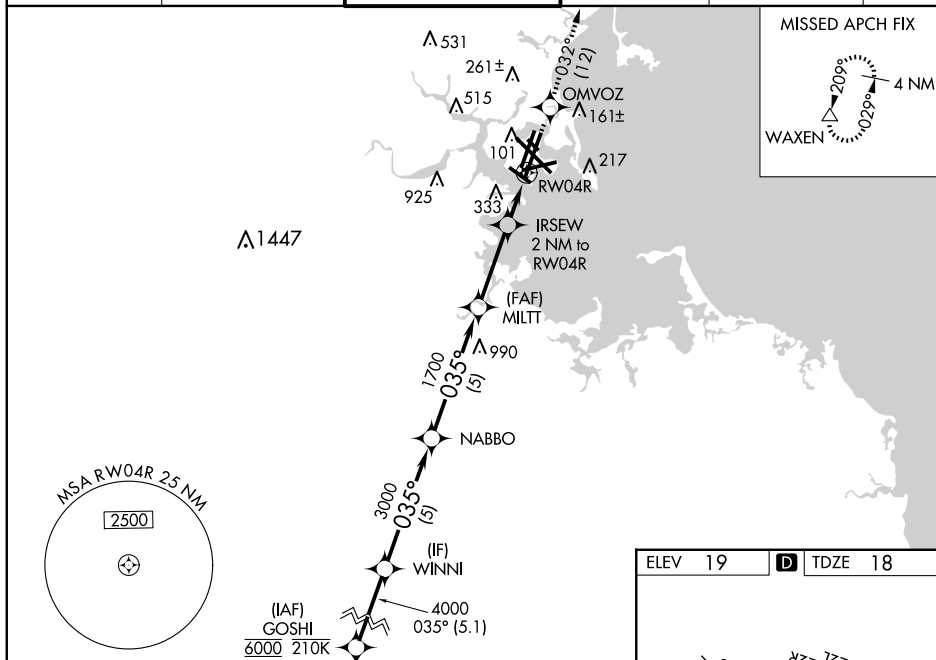
For uncompensated Baro-VNAV systems, LNAV/VNAV NA below -16°C or above 54°C. For inop ALS increase LNAV/VNAV all Cats visibility to 1% SM. When control tower reports tall vessels in approach area: increase LPV DA to 374 and all Cats visibility to RVR 4000, increase LNAV Cat A/B visibility to RVR 4000, for inop ALS with tall vessels increase LNAV/VNAV all Cats visibility to 1% SM, LNAV Cat A/B visibility to RVR 5500 and LNAV Cat C/D to 1% SM. For tall vessels Rwy 4R helicopter visibility reduction below RVR 4000 NA. When vessels taller than 144 feet present. LPV and LNAV/VNAV NA.

ALSF-2

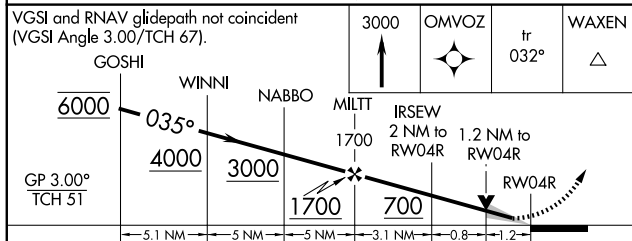


MISSED APPROACH:
Climb to 3000 direct
OMVOZ and on track
032° to WAXEN and
hold

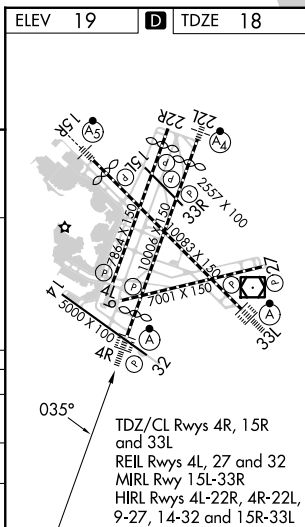
D-ATIS	BOSTON APP CON	BOSTON TOWER		GND CON	CLNC DEL	CPDLC
135.0	120.6 263.1	128.8 257.8 (WEST)		121.75 121.9	121.65 257.8	
		132.225 257.8 (EAST)				



VGSI and RNAV glidepath not coincident
(VGSI Angle 3.00/TCH 67).



CATEGORY	A	B	C	D
LPV DA	218/18 200 (200-½)			
RNAV/ VNAV DA	514/50 496 (500-1)			
RNAV MDA	480/24 462 (500-½)	480/50 462 (500-1)		



RNAV (GPS) RWY 4R