

WAAS CH <b>77738</b> <b>W04B</b>	APP CRS <b>037°</b>	Rwy Idg <b>7864</b> TDZE <b>14</b> Apt Elev <b>19</b>
--	------------------------	---

RNAV (GPS) RWY 4L

GENERAL EDWARD LAWRENCE LOGAN INTL (BOS)

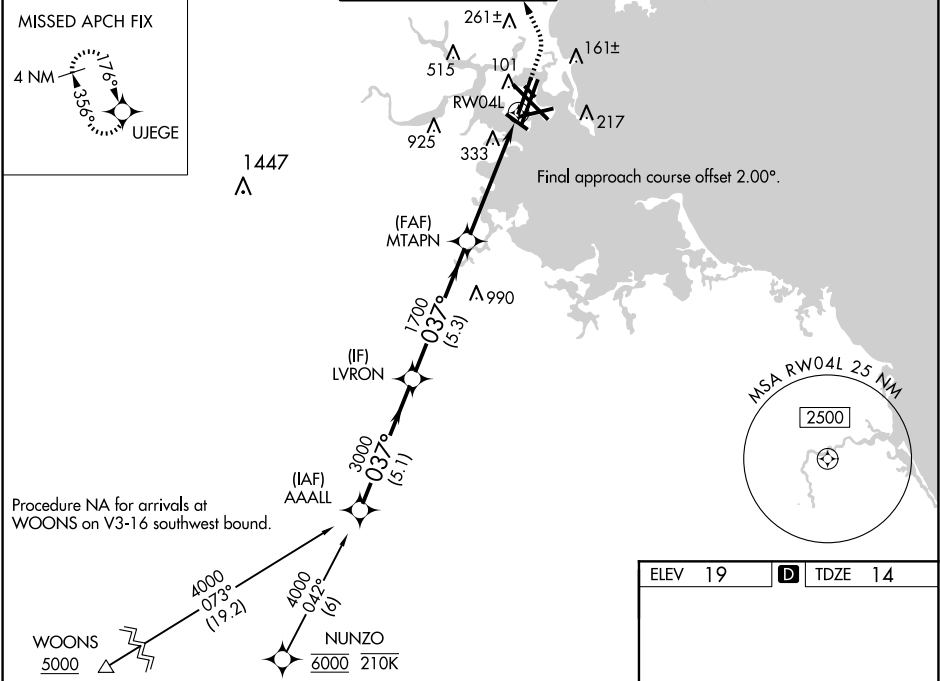
RNP APCH - GPS.

▼ For uncompensated Baro-VNAV systems, LNAV/VNAV NA below -14°C or above 54°C. Use of FD or AP required during simultaneous operations. Simultaneous operations require use of vertical guidance; maintain last assigned altitude until established on glidepath. LNAV procedure NA during simultaneous operations. Rwy 4L helicopter visibility reduction below RVR 4000 NA. When control tower reports tall vessels in approach area: increase LPV DA to 369 and all Cats visibility to RVR 5500. LPV and LNAV/VNAV NA when vessels taller than 137 feet present.

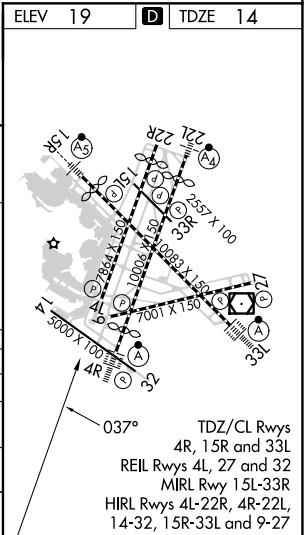
MISSED APPROACH: Climb to 700 then climbing left turn to 3000 direct UJEGE and hold, continue climb-in-hold to 3000.

\* Missed approach requires minimum climb of 425 feet per NM to 900.

D-ATIS <b>135.0</b>	BOSTON APP CON <b>120.6 263.1</b>	BOSTON TOWER <b>128.8 257.8 (WEST)</b> <b>132.225 257.8 (EAST)</b>	GND CON <b>121.75 121.9</b>	CLNC DEL <b>121.65 257.8</b>	CPDLC
------------------------	--------------------------------------	--	--------------------------------	---------------------------------	-------



	AAALL	LVRON	MTAPN	UJEGE
	4000	3000	1700	700
	GP 3.10°	037°	1700	1.7 NM to RWY 04L
	5.1 NM	5.3 NM	3.3 NM	1.7 NM
CATEGORY	A	B	C	D
LPV DA		318/45	304 (300-7%)	
LNAV/VNAV DA		768-2	754 (800-2)	
LNAV/VNAV DA *		680-17½	666 (700-17½)	
LNAV MDA	600/55	586 (600-1)	600-1¾	586 (600-1¾)



NE-1, 07 AUG 2025 to 04 SEP 2025

NE-1, 07 AUG 2025 to 04 SEP 2025