

APP CRS
331°

Rwy ldg
TDZE
19

Apt Elev
19

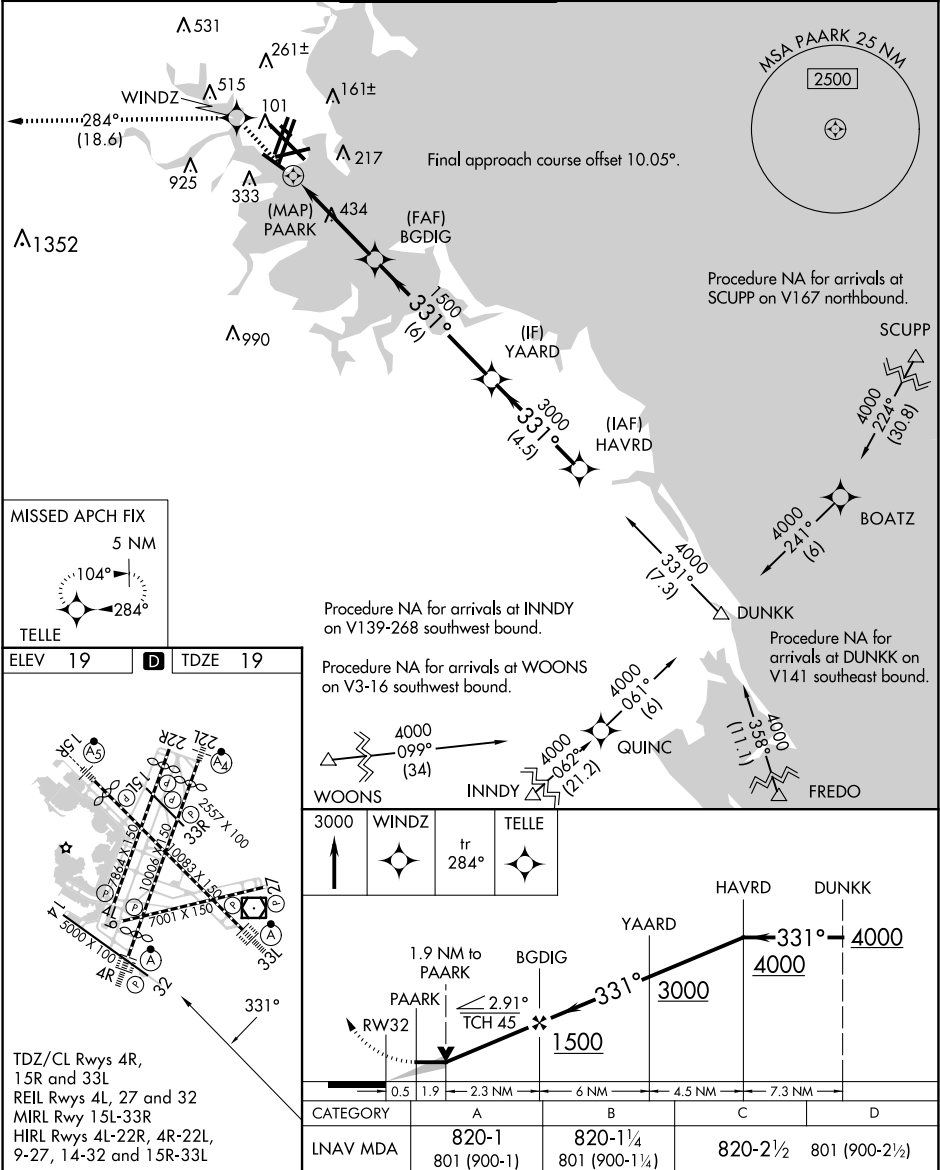
RNAV (GPS) RWY 32

GENERAL EDWARD LAWRENCE LOGAN INTL (BOS)

RNP APCH - GPS.

MISSED APPROACH: Climb to 3000 direct WINDZ and on track 284° to TELLE and hold.

D-ATIS 135.0	BOSTON APP CON 120.6 263.1	BOSTON TOWER 128.8 257.8 (WEST) 132.225 257.8 (EAST)	GND CON 121.75 121.9	CLNC DEL 121.65 257.8	CPDLC
------------------------	--------------------------------------	--	--------------------------------	---------------------------------	-------



NE-1, 07 AUG 2025 to 04 SEP 2025

NE-1, 07 AUG 2025 to 04 SEP 2025