

APP CRS

272°

Rwy Idg

2001

TDZE

17

Apt Elev

19

RNAV (GPS) RWY 27

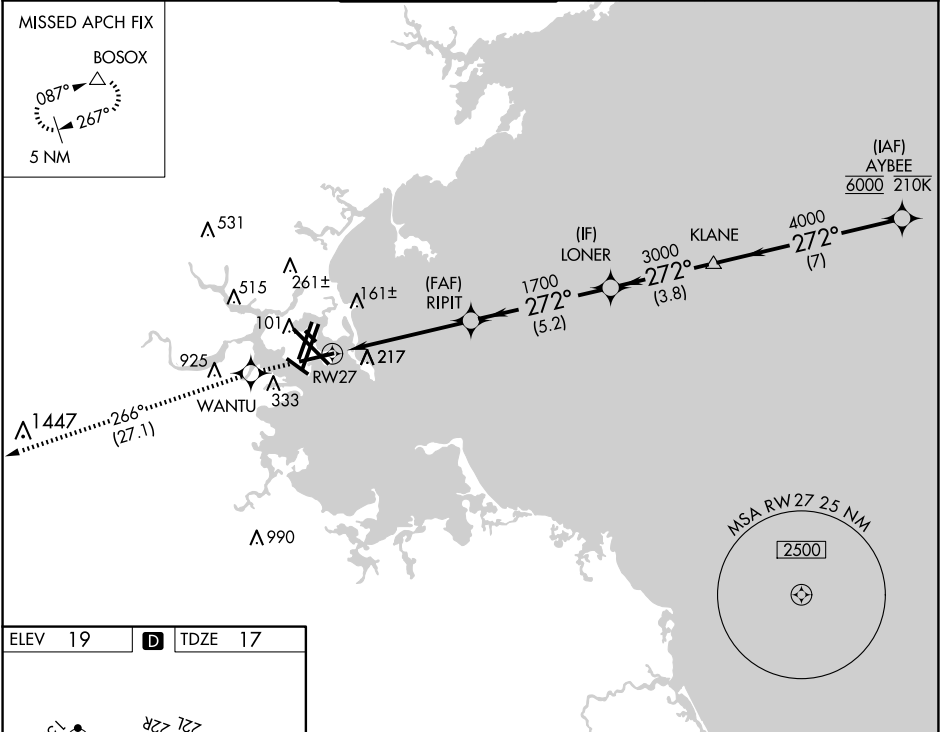
GENERAL EDWARD LAWRENCE LOGAN INTL (BOS)

RNP APCH - GPS.

For uncompensated Baro-VNAV systems, LNAV/VNAV NA below -15°C or above 54°C.

MISSED APPROACH: Climb to 3000 direct WANTU and on track 266° to BOSOX and hold.

D-ATIS 135.0	BOSTON APP CON 120.6 263.1	BOSTON TOWER 128.8 257.8 (WEST) 132.225 257.8 (EAST)	GND CON 121.75 121.9	CLNC DEL 121.65 257.8	CPDLC
-----------------	-------------------------------	--	-------------------------	--------------------------	-------



ELEV 19

D

TDZE 17

TDZ/CL Rwys 4R, 15R and 33L

REIL Rwys 4L, 27 and 32

MRL Rwy 15L-33R

HIRL Rwys 4L-22R, 4R-22L, 9-27, 14-32 and 15R-33L

3000

WANTU

tr 266°

BOSOX

VGSI and RNAV glidepath not coincident (VGSI Angle 3.00/TCH 71).

1.7 NM to RW27

RIPIT 1700

LONER 3000

KLANE 4000

AYBEE 6000

GP 3.00° TCH 57

CATEGORY	A	B	C	D
LNAV/VNAV	DA	510-1 $\frac{3}{8}$	493 (500-1 $\frac{3}{8}$ )	
LNAV MDA	640-1 $\frac{1}{2}$	623 (700-1 $\frac{1}{2}$ )	640-1 $\frac{3}{4}$	623 (700-1 $\frac{3}{4}$ )