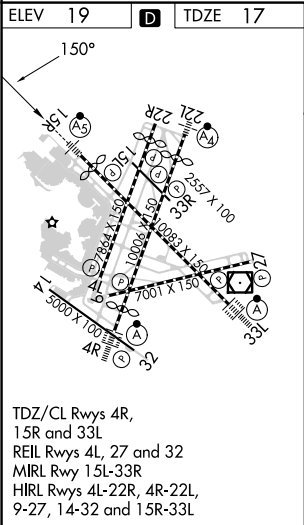
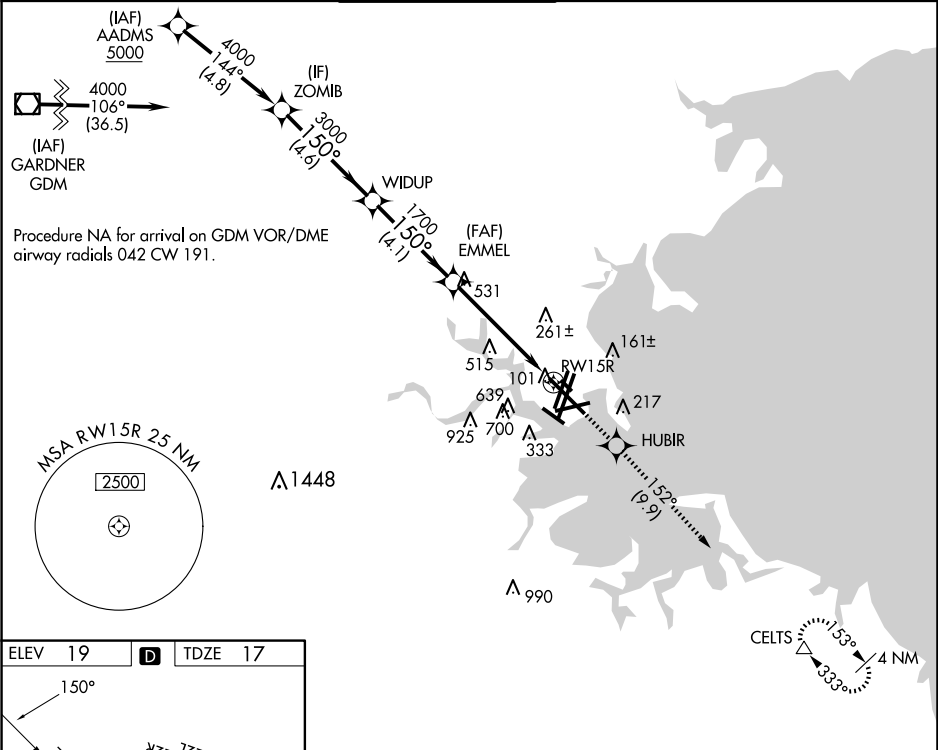


WAAS CH 42925 W15A	APP CRS 150°	Rwy Idg TDZE 17 Apt Elev 19
--	------------------------	---

RNAV (GPS) RWY 15R

GENERAL EDWARD LAWRENCE LOGAN INTL (BOS)

RNP APCH - GPS. ▼ For uncompensated Baro-VNAV systems, LNAV/VNAV NA below -15°C or above 54°C. For inop ALS, increase LNAV Cats C and D visibility to 1 3⁄4 SM.			MALSR AG	MISSED APPROACH: Climb to 3000 direct HUBIR and on track 152° to CELTS and hold.	
D-ATIS 135.0	BOSTON APP CON 120.6 263.1	BOSTON TOWER 128.8 257.8 (WEST) 132.225 257.8 (EAST)	GND CON 121.75 121.9	CLNC DEL 121.65 257.8	CPDLC



VGSI and RNAV glidepath not coincident (VGSI Angle 3.00/TCH 71).				3000	HUBIR	tr 152°	CELTS
ZOMIB				4000	WIDUP	EMMEL	1.7 NM to RW15R
GP 3.00° TCH 60				3000	1700	1700	RW15R
				4.6 NM	4.1 NM	3.5 NM	1.7 NM
CATEGORY	A	B	C	D			
LPV DA	217/18		200 (200-1⁄2)				
LNAV/VNAV DA	567-1 1⁄8		550 (600-1 1⁄8)				
LNAV MDA	620/24	603 (700-1⁄2)	620-1 3⁄8	603 (700-1 3⁄8)			