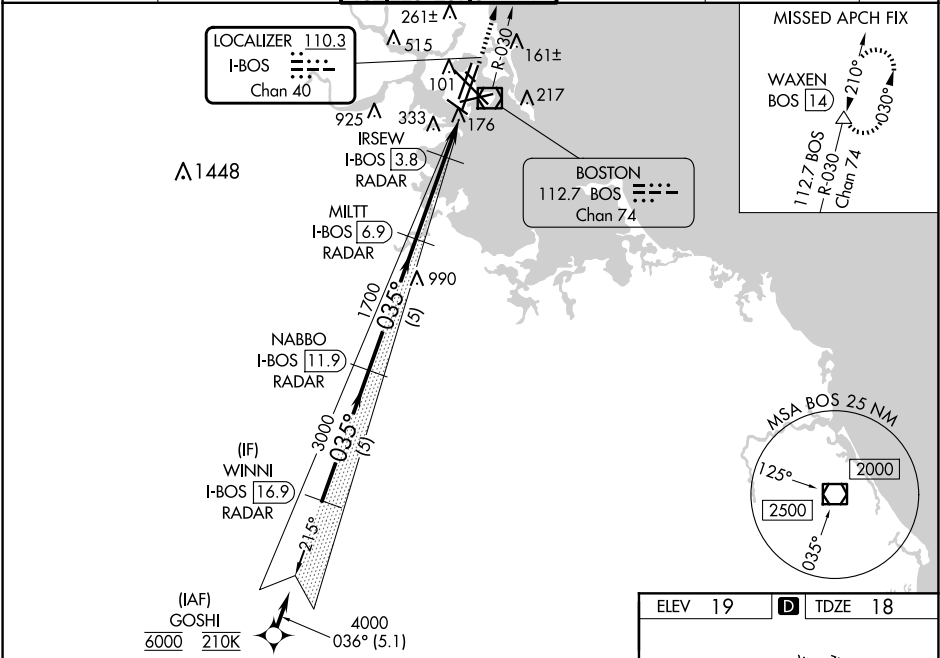


LOC/DME I-BOS 110.3 Chan 40	APP CRS 035°	Rwy Ldg 8851 TDZE 18 Apt Elev 19	ILS or LOC RWY 4R GENERAL EDWARD LAWRENCE LOGAN INTL (BOS)
---	------------------------	---	--

RNP APCH - GPS. From GOSHI. DME required.	ALSIF-2 	MISSED APPROACH: Climb to 3000 on BOS VOR/DME R-030 to WAXEN/BOS 14 DME and hold.
Simultaneous approach authorized. Simultaneous operations require use of vertical guidance; maintain last assigned altitude until established on glideslope. Use of FD or AP required during simultaneous operations. LOC procedure NA during simultaneous operations. * For inop ALS increase S-LOC 4R Cat A/B visibility to RVR 5500. # When vessels taller than 144 feet present, S-ILS 4R NA.		

D-ATIS 135.0	BOSTON APP CON 120.6 263.1	BOSTON TOWER 128.8 257.8 (WEST) 132.225 257.8 (EAST)	GND CON 121.75 121.9	CLNC DEL 121.65 257.8	CPDLC
------------------------	--------------------------------------	--	--------------------------------	---------------------------------	-------



VGSI and ILS glidepath not coincident (VGSI Angle 3.00/TCH 67').				3000	BOS R-030	WAXEN
CATEGORY	A	B	C	D		
S-ILS 4R		218/18	200 (200-½)			
S-LOC 4R	440/24	422 (500-½)	440/40	422 (500-¾)		
# APPROACH MINIMA WHEN CONTROL TOWER REPORTS TALL VESSELS IN APPROACH AREA						
S-ILS 4R		374/40	356 (400-¾)			
S-LOC 4R*		440/40	422 (500-¾)			

