

LOC/DME I-LQN 110.3 Chan 40	APP CRS 215°	Rwy Idg 8806 TDZE 16 Apt Elev 19
---	------------------------	---

ILS or LOC RWY 22L

GENERAL EDWARD LAWRENCE LOGAN INTL (BOS)

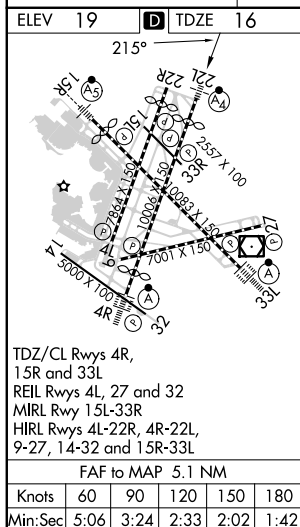
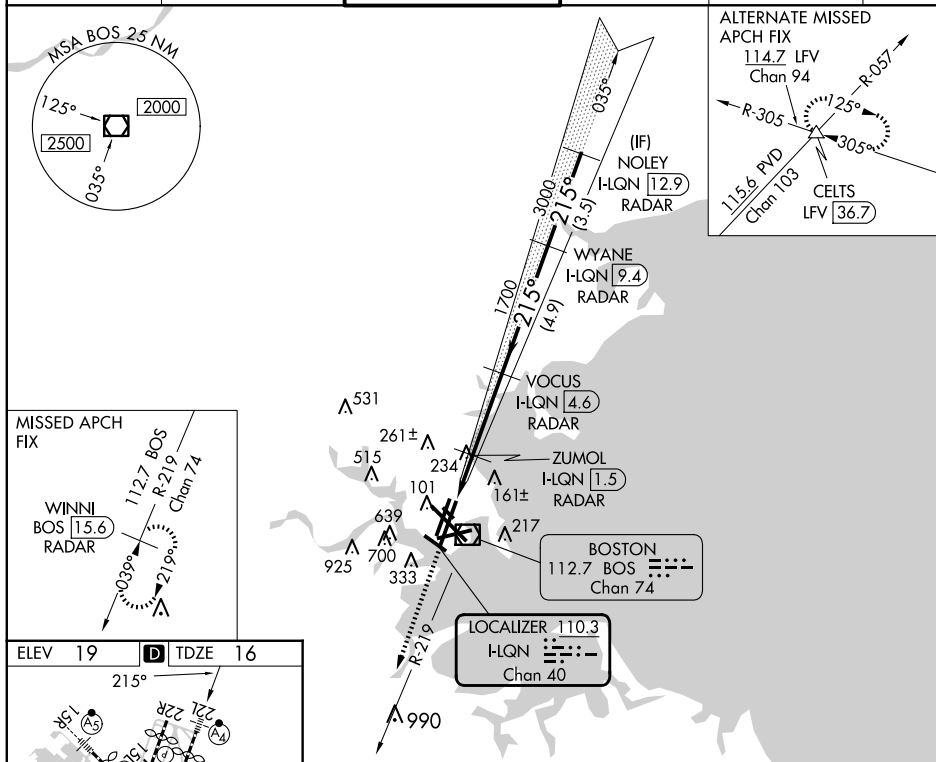
RADAR required for procedure entry. DME or RADAR required.

▼ Inop table does not apply to S-ILS 22L.

MALSF

MISSED APPROACH: Climb to 3000 on BOS VOR/DME R-219 to WINNI/BOS 15.6 DME/RADAR and hold.

D-ATIS 135.0	BOSTON APP CON 120.6 263.1	BOSTON TOWER 128.8 257.8 (WEST) 132.225 257.8 (EAST)	GND CON 121.75 121.9	CLNC DEL 121.65 257.8	CPDLC
------------------------	--------------------------------------	--	--------------------------------	---------------------------------	-------



3000 ↑ BOS R-219		WINNI BOS 15.6		VGSJ and ILS glidepath not coincident (VGSJ Angle 3.00°/TCH 71).	
CATEGORY	A		B	C	D
S-ILS 22L	216/40 200 (200-¾)				
S-LOC 22L	540/40 524 (600-¾)		540-1¼ 524 (600-1¼)		

ILS or LOC RWY 22L