

LOC/DME I-MDC

110.7

APP CRS

149°

Rwy Idg

9201

TDZE

17

Apt Elev

19

Chan 44

GENERAL EDWARD LAWRENCE LOGAN INTL (BOS)

ILS or LOC RWY 15R

RNP APCH - GPS. From AADMS.

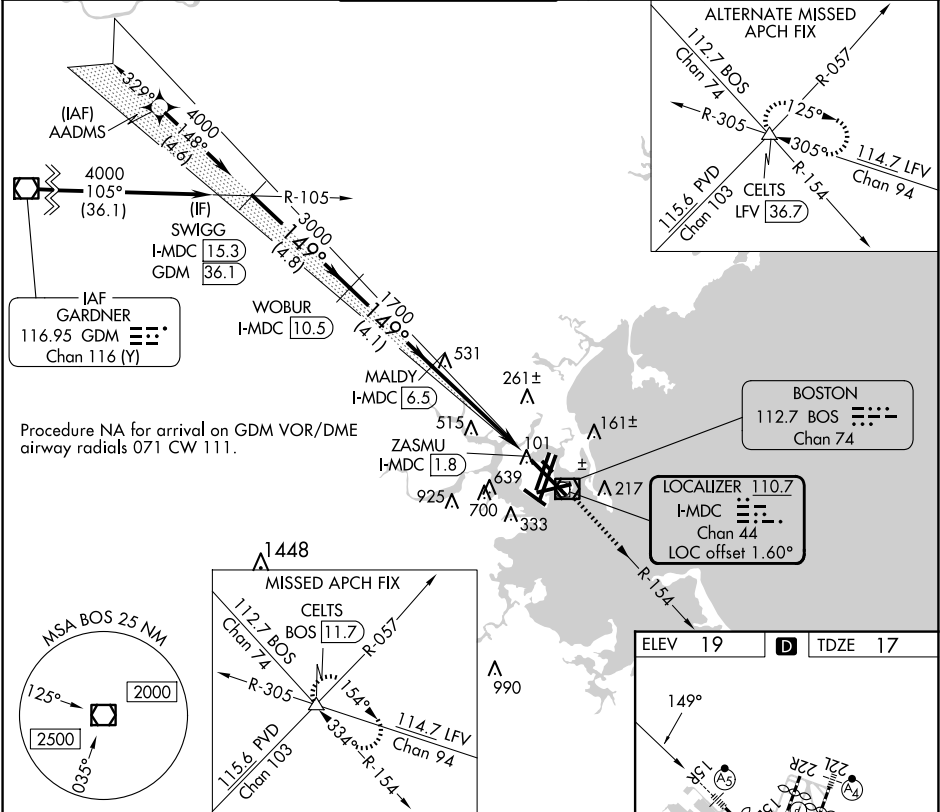
DME required.

For inop ALS, increase S-LOC 15R Cats C/D visibility to 1½ SM.

MALSR

MISSED APPROACH: Climb to 3000 on BOS VOR/DME R-154 to CELTS INT/BOS 11.7 DME and hold.

D-ATIS	BOSTON APP CON	BOSTON TOWER	GND CON	CLNC DEL	CPDLC
135.0	120.6 263.1	128.8 257.8 (WEST) 132.225 257.8 (EAST)	121.75 121.9	121.65 257.8	



SWIGG I-MDC 15.3

VGSI and ILS glidepath not coincident (VGSI Angle 3.00/TCH 71).

3000

CELT5

4000

149°

3000

1700

1700

ZASMU I-MDC 1.8

4.8 NM

4.1 NM

4.7 NM

0.4

ELEV 19

D

TDZE 17

CATEGORY	A	B	C	D
S-ILS 15R	267/24 250 (300-½)			
S-LOC 15R	580/24 563 (600-½)	580-1¼ 563 (600-1¼)		

TDZ/CL Rwy5 4R, 15R and 33L

REIL Rwy5 4L, 27 and 32

MIRL Rwy 15L-33R

HIRL Rwy5 4L-22R, 4R-22L, 9-27, 14-32 and 15R-33L

NE-1, 07 AUG 2025 to 04 SEP 2025

NE-1, 07 AUG 2025 to 04 SEP 2025