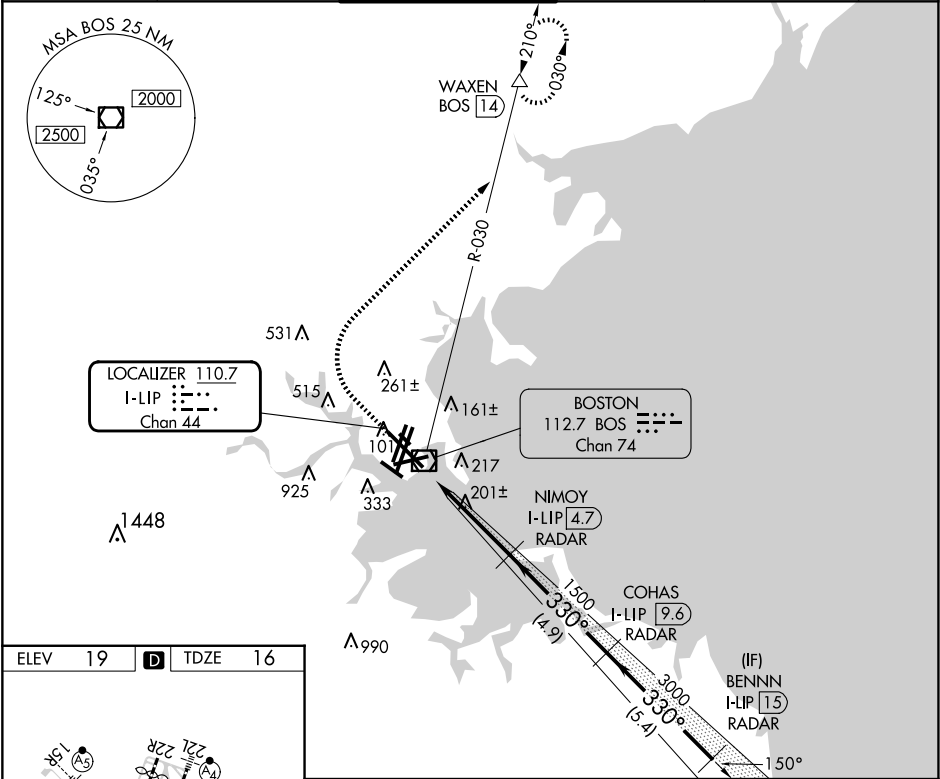


LOC/DME I-LIP	APP CRS	Rwy Idg	10083	ILS RWY 33L (SA CAT I) GENERAL EDWARD LAWRENCE LOGAN INTL (BOS)
110.7	330°	TDZE	16	
Chan 44		Apt Elev	19	

RADAR required for procedure entry. DME required.		ALSF-2	MISSED APPROACH: Climb to 1500 then climbing right turn to 3000 on BOS VOR/DME R-030 to WAXEN/BOS 14 DME and hold.	
Requires specific OPSPEC, MSPEC, or LOA approval.				

D-ATIS	BOSTON APP CON	BOSTON TOWER	GND CON	CLNC DEL	CPDLC
135.0	120.6 263.1	128.8 257.8 (WEST) 132.225 257.8 (EAST)	121.75 121.9	121.65 257.8	



	 1500	 3000 BOS R-030	 WAXEN	VGSI and ILS glidepath not coincident (VGSI Angle 3.00/TCH 68).		 BENNN I-LIP 15 RADAR
					 NIMOY I-LIP 4.7 RADAR	 COHAS I-LIP 9.6 RADAR
		1500			1500	330°
					3000	4000
						GS 3.00° TCH 57
	976'	4.5 NM	4.9 NM	5.4 NM		
CATEGORY	A	B	C	D		
S-ILS 33L	RA 166/14 150 DA 166					
SA CATEGORY I ILS - SPECIAL AIRCREW & AIRCRAFT CERTIFICATION REQUIRED						