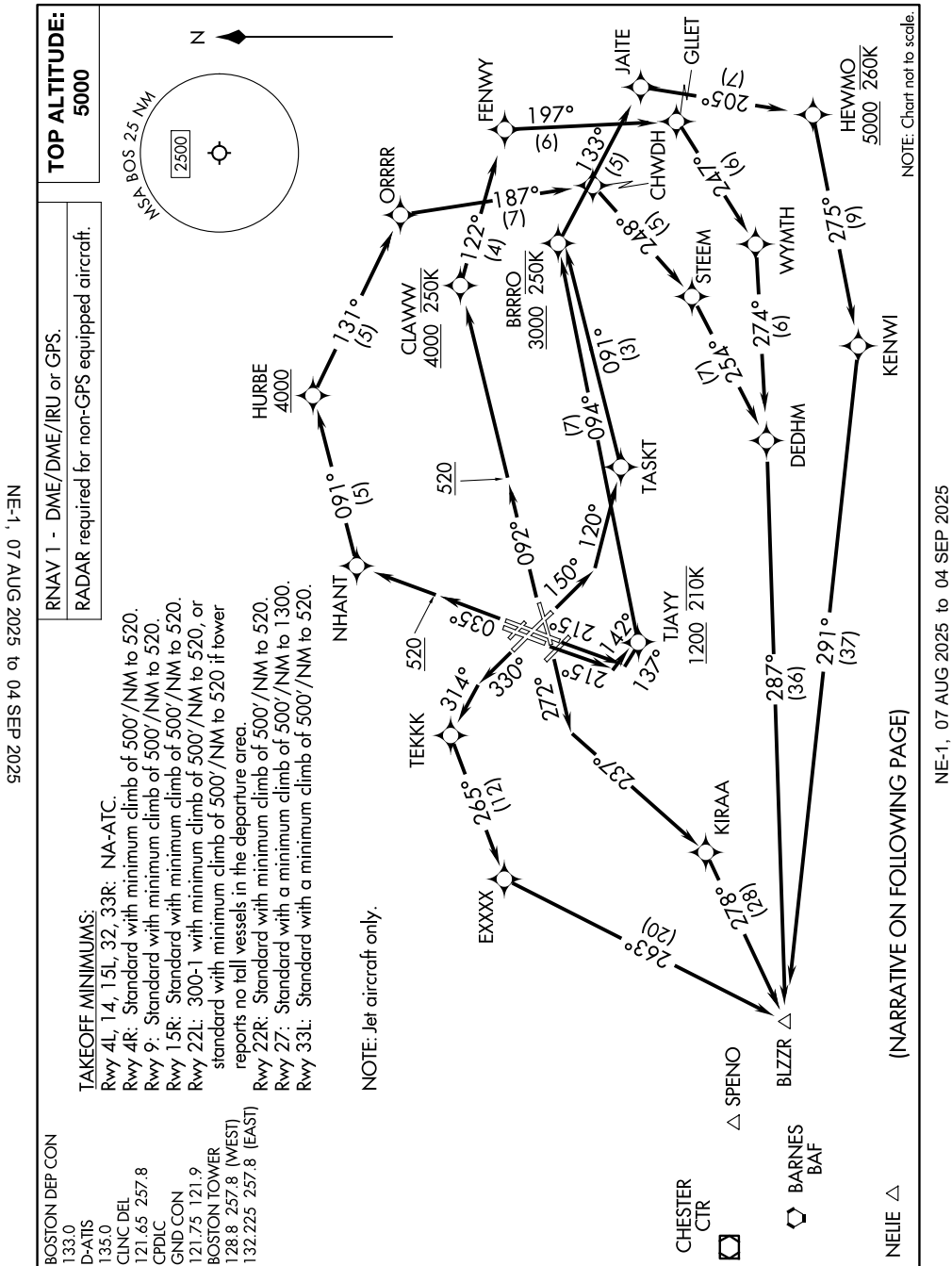


BLZZR SIX DEPARTURE (RNAV)

AL-58 (FAA)

BOSTON, MASSACHUSETTS



BOSTON DEP CON
133.0
D-ATIS
135.0
CLNC DEL
121.65 257.8
CPDLC
GND CON
121.75 121.9
BOSTON TOWER
128.8 257.8 (WEST)
132.225 257.8 (EAST)

TAKEOFF MINIMUMS:

Rwy 4L, 14, 15L, 32, 33R: NA-ATC.

Rwy 4R: Standard with minimum climb of 500'/NM to 520.

Rwy 9: Standard with minimum climb of 500'/NM to 520.

Rwy 15R: Standard with minimum climb of 500'/NM to 520.

Rwy 22L: 300-1 with minimum climb of 500'/NM to 520, or

standard with minimum climb of 500' / NM to 520 if tower

reports no tall vessels in the departure area.

Rwy 22R: Standard with minimum climb of 500'/NM to 520.

Rwy 27: Standard with a minimum climb of 500'/NM to 1300.

Rwy 33L: Standard with a minimum climb of 500'/NM to 520.

NOTE: Jet aircraft only.

RNAV 1 - DME/DME/IRU or GPS.

RADAR required for non-GPS equipped aircraft.

TOP ALTITUDE:

5000

(NARRATIVE ON FOLLOWING PAGE)

NE-1. 07 AUG 2025 to 04 SEP 2025

NOTE: Chart not to scale.