

VORTAC BOI	APP CRS	Rwy Ldg	28L	28R
113.3	278°	TDZE	9763	10000
Chan 80		Apt Elev	2858	2872
			2872	2872

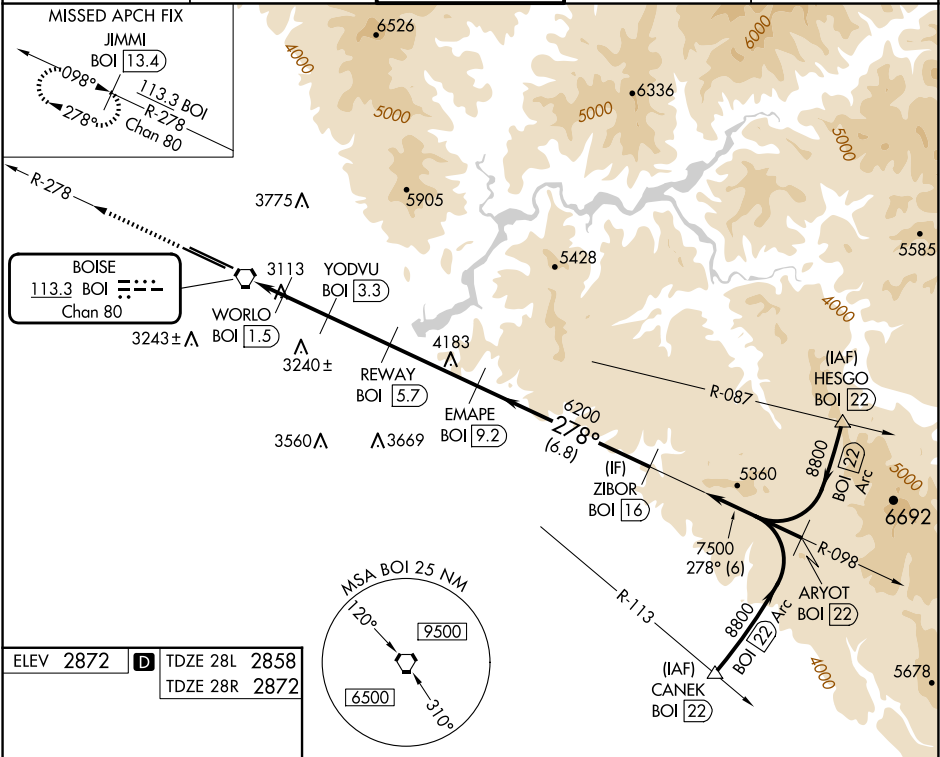
VOR Y or TACAN Y RWY 28L

BOISE AIR TRML/GOWEN FLD (BOI)

DME required.	MALSR Rwy 28L
<div><div></div><div></div></div> Circling NA north of Rwy 10L-28R. For inop ALS, increase S-28L Cat E visibility to 1½ SM.	<div><div></div><div></div></div>

MISSED APPROACH: Climb to 6000 on BOI VORTAC R-278 to JIMMI/13.4 DME and hold.

D-ATIS	BIG SKY APP CON	BOISE TOWER	GND CON	CLNC DEL
123.9 290.4	119.6 269.4	118.1 257.8	121.7 348.6	125.9 323.2



ELEV 2872	TDZE 28L 2858
	TDZE 28R 2872

REIL Rwy 10L

TDZ/CL Rws 10R and 28L

HIRL Rws 10L-28R and 10R-28L

6000 ↑ BOI R-278	JIMMI BOI 13.4		YODVU BOI 3.3	REWAY BOI 5.7	EMAPE BOI 9.2	ZIBOR BOI 16
	WORLO BOI 1.5					
BOI VORTAC	BOI 0.6					
				3.10° TCH 50		