

BOISE, IDAHO

AL-57 (FAA)

25163

WAAS CH 65803 W28B	APP CRS 282°	Rwy Ldg 10000 TDZE 2871 Apt Elev 2871
--	------------------------	--

RNAV (GPS) Y RWY 28R

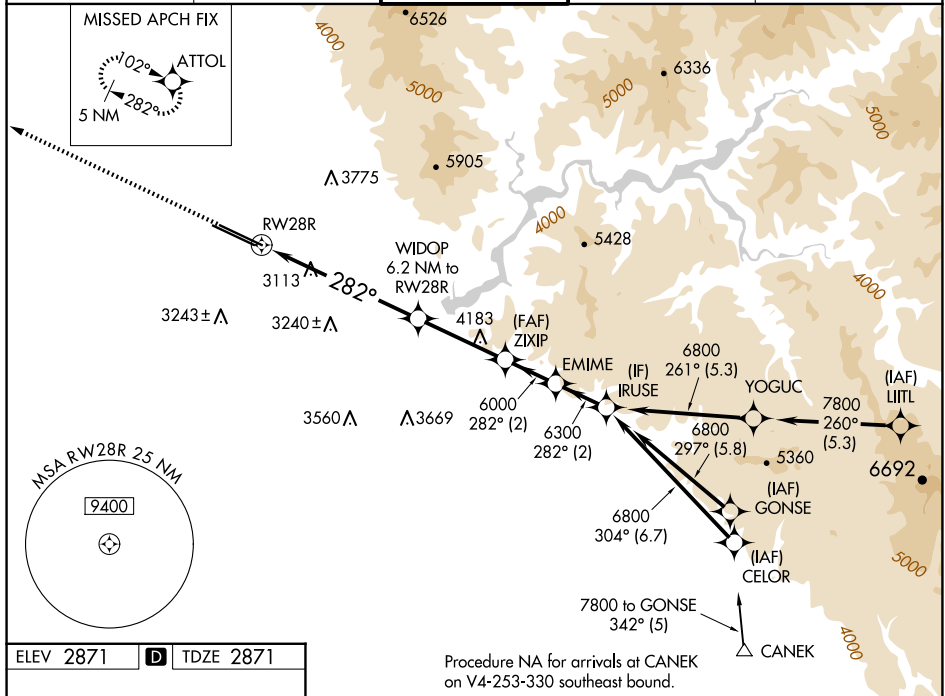
BOISE AIR TRML/GOWEN FLD (BOI)



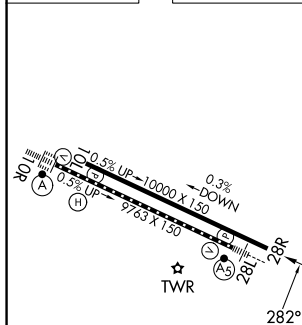
For uncompensated Baro-VNAV systems, LNAV/VNAV NA below -12°C (11°F) or above 52°C (126°F).
Circling NA north of Rwy 10L-28R. DME/DME RNP-0.3 NA.

MISSED APPROACH: Climb to 6000 direct ATTOL and hold, continue climb-in-hold to 6000.

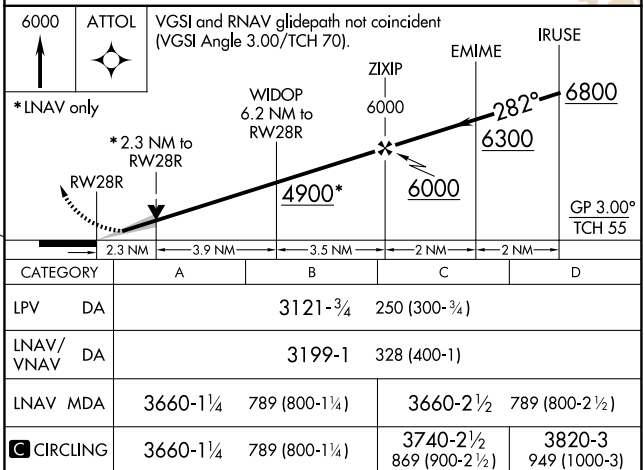
D-ATIS 123.9 290.4	BIG SKY APP CON 119.6 269.4	BOISE TOWER 118.1 257.8	GND CON 121.7 348.6	CLNC DEL 125.9 323.2
-----------------------	--------------------------------	----------------------------	------------------------	-------------------------



ELEV 2871	D	TDZE 2871
-----------	----------	-----------



Procedure NA for arrivals at CANEK
on V4-253-330 southeast bound.



REIL Rwy 10L
TDZ/CL Rwy 10R and 28L
HRL Rwy 10L-28R and 10R-28L

BOISE, IDAHO

Amdt 6A 07DEC17

43°34'N-116°13'W

BOISE AIR TRML/GOWEN FLD (BOI)

RNAV (GPS) Y RWY 28R

NW-1, 07 AUG 2025 to 04 SEP 2025