


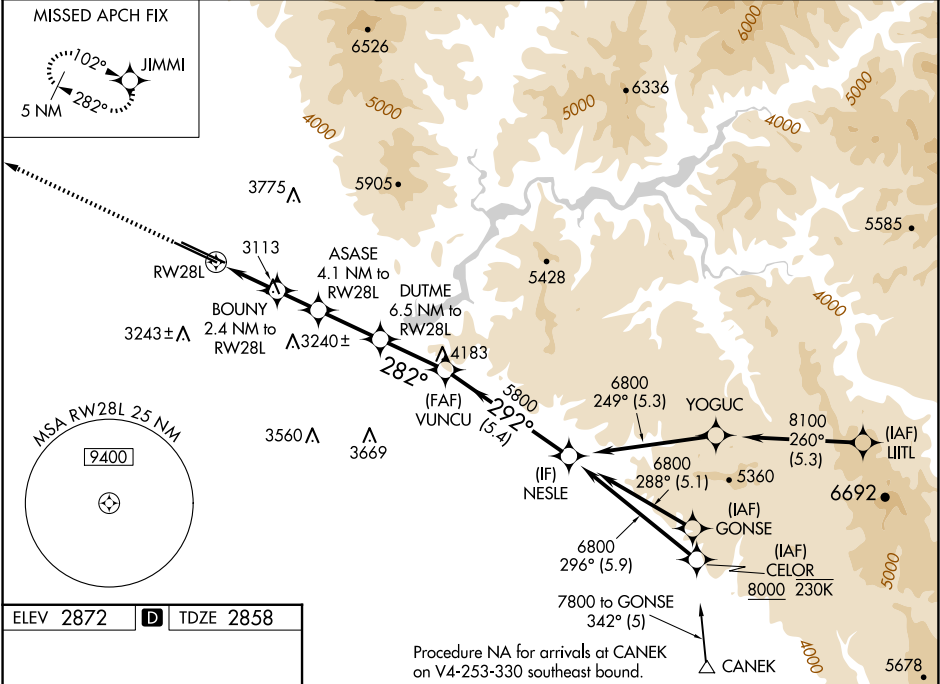
WAAS CH 77702 W28A	APP CRS 282°	Rwy Ldg TDZE Apt Elev	9763 2858 2872
--	------------------------	-----------------------------	---

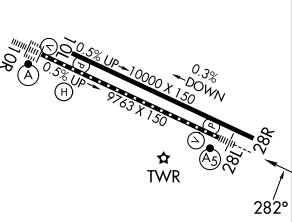
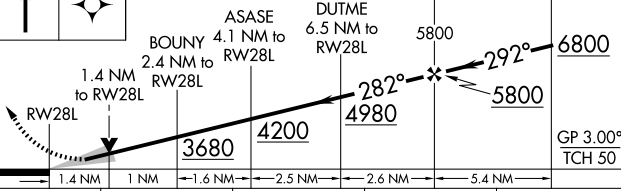

RNAV (GPS) Y RWY 28L

BOISE AIR TRML/GOWEN FLD (BOI)

RNP APCH - GPS.		<div>MALSR</div> <div></div>	<div>MISSED APPROACH: Climb to 6000 direct JIMMI and hold, continue climb-in-hold to 6000.</div>
<div><div><div><div><div></div><div></div></div><div><div></div><div></div></div></div><div><div></div><div></div></div></div></div> <div><div><div><div></div><div></div></div><div><div></div><div></div></div></div><div><div></div><div></div></div></div>	<div>Circling NA north of Rwy 10L-28R. For uncompensated Baro-VNAV systems, LNAV/VNAV NA below -14°C or above 54°C. For inop ALS, increase LPV all Cats visibility to RVR 4500, and LNAV/VNAV all Cats visibility to RVR 6000.</div>		

D-ATIS 123.9 290.4	BIG SKY APP CON 119.6 269.4	BOISE TOWER 118.1 257.8	GND CON 121.7 348.6	CLNC DEL 125.9 323.2
------------------------------	---------------------------------------	-----------------------------------	-------------------------------	--------------------------------



		VGSi and RNAV glidepath not coincident (VGSi Angle 3.00/TCH 50).			
		GP 3.00° TCH 50			
CATEGORY	A	B	C	D	
LPV DA	3160/24 302 (300-½)				
LNAV/VNAV DA	3267/40 409 (400-¾)				
LNAV MDA	3380/24 522 (600-½)		3380/55 522 (600-1)		
 CIRCLING	3440-1 568 (600-1)		3640-2¼ 768 (800-2¼)		3820-3 948 (1000-3)