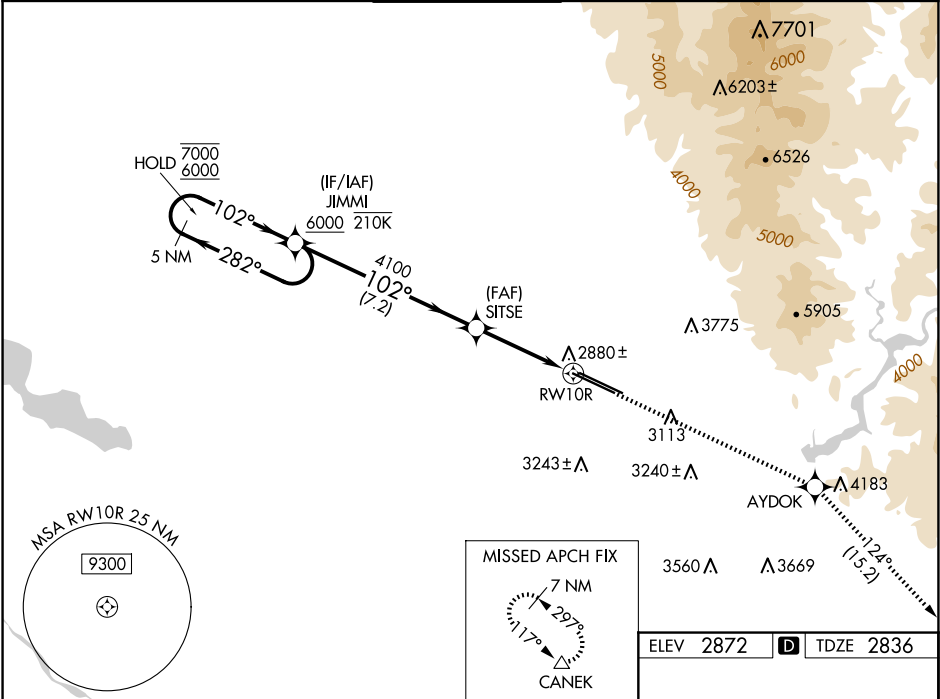


WAAS CH 40203 W10B	APP CRS 102°	Rwy Ldg TDZE 2836 Apt Elev 2872
--	------------------------	---

RNAV (GPS) Y RWY 10R
BOISE AIR TRML/GOWEN FLD (BOI)

RADAR required for procedure entry. RNP APCH + GPS.		ALSIF-2 	MISSED APPROACH: Climb to 7300 direct AYDOK and on track 124° to CANEK and hold.
	Circling NA north of Rwy 10L-28R. For uncompensated Baro-VNAV systems, LNAV/VNAV NA below -14°C or above 54°C.		

D-ATIS 123.9 290.4	BIG SKY APP CON 119.6 269.4	BOISE TOWER 118.1 257.8	GND CON 121.7 348.6	CLNC DEL 125.9 323.2
------------------------------	---------------------------------------	-----------------------------------	-------------------------------	--------------------------------



VGSI and RNAV glidepath not coincident (VGSI Angle 3.00/TCH 64).				
5 NM Holding Pattern		JIMMI	7300	AYDOK
7000 6000				tr 124°
GP 3.00° TCH 54		SITSE		CANEK
7.2 NM		4100	1.2 NM to RWY 10R	
			RWY 10R	
CATEGORY	A	B	C	D
LPV DA	3036/18 200 (200-½)			
LNAV/VNAV DA	3173/26 337 (400-½)			
LNAV MDA	3260/24	424 (400-½)	3260/40	424 (400-¾)
CIRCLING	3440-1	568 (600-1)	3640-2¼ 768 (800-2¼)	3820-3 948 (1000-3)

ELEV 2872	TDZE 2836
REIL Rwy 10L	
TDZ/CL Rwy 10R and 28L	
HIRL Rwy 10L-28R and 10R-28L	