

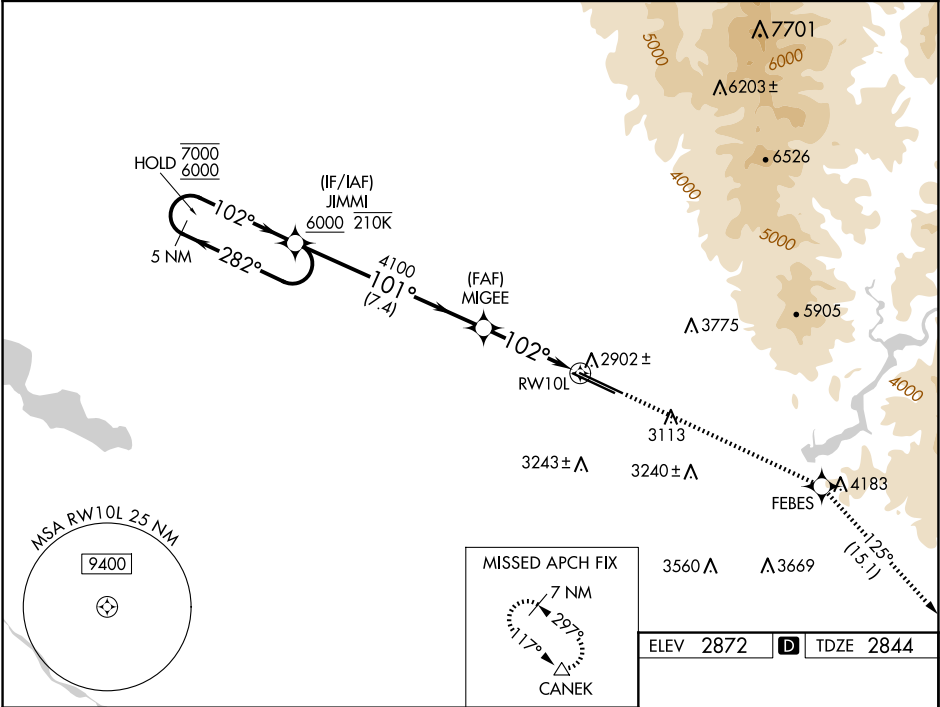
WAAS CH 78102 W10A	APP CRS 102°	Rwy Ldg TDZE 2844 Apt Elev 2872
--	------------------------	---

RNAV (GPS) Y RWY 10L

BOISE AIR TRML/GOWEN FLD (BOI)

RADAR required for procedure entry. RNP APCH - GPS.		MISSED APPROACH: Climb to 7300 direct FEBES then on track 125° to CANEK and hold.
<div><div><div>V</div><div>A</div></div></div>	Circling NA north of Rwy 10L-28R. For uncompensated Baro-VNAV systems, LNAV/VNAV NA below -14°C or above 54°C.	

D-ATIS 123.9 290.4	BIG SKY APP CON 119.6 269.4	BOISE TOWER 118.1 257.8	GND CON 121.7 348.6	CLNC DEL 125.9 323.2
------------------------------	---------------------------------------	-----------------------------------	-------------------------------	--------------------------------



5 NM Holding Pattern		JIMMI	MIGEE	7300	FEBES	CANEK
7000 6000		←282° 102°→	101°	4100	1.4 NM to RW10L	
GP 3.00° TCH 53		7.4 NM	2.5 NM	1.4 NM		
CATEGORY	A	B	C	D		
LPV DA	3044-¾ 200 (200-¾)					
LNAV/VNAV DA	3197-1 353 (400-1)					
LNAV MDA	3320-1	476 (500-1)	3320-1⅓	476 (500-1⅓)		
CIRCLING	3440-1	568 (600-1)	3640-2¼ 768 (800-2¼)	3820-3 948 (1000-3)		

