

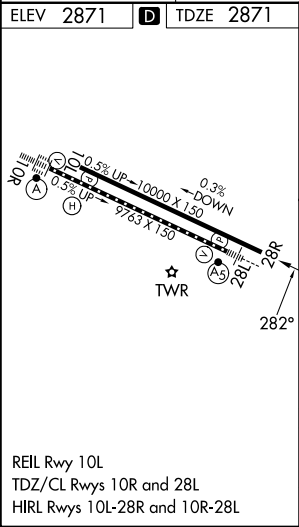
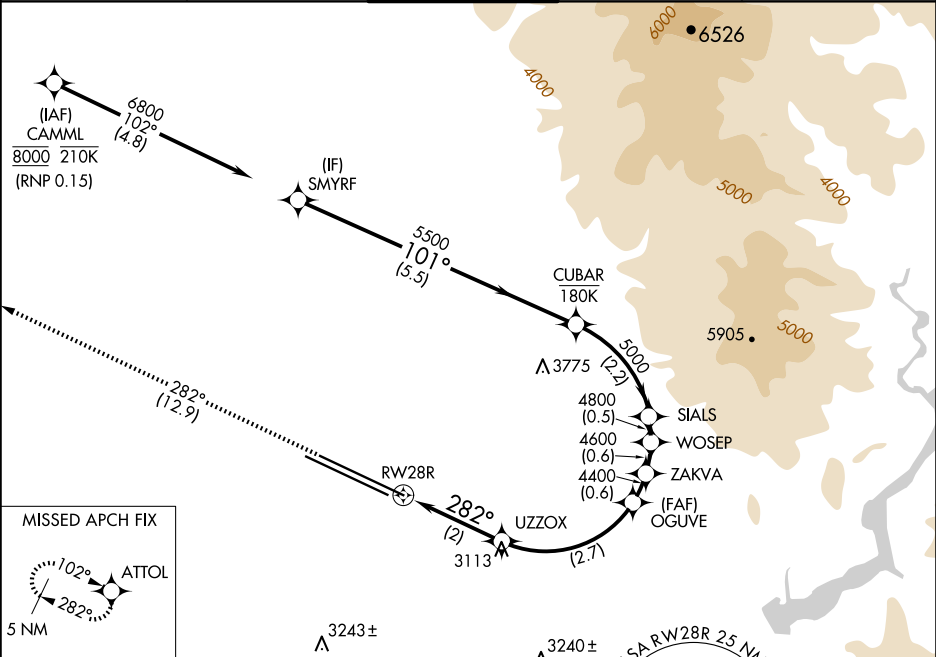
APP CRS	Rwy Ldg	10000
282°	TDZE	2871
	Apt Elev	2871

RNAV (RNP) X RWY 28R

BOISE AIR TRML/GOWEN FLD (BOI)

<div><div>NA</div><div>For uncompensated Baro-VNAV systems, procedure NA below -14°C (7°F) or above 52°C (126°F). RF required. GPS required.</div></div>	MISSED APPROACH: Climb to 6000 on track 282° to ATTOL and hold.
--	---

D-ATIS	BIG SKY APP CON	BOISE TOWER	GND CON	CLNC DEL
123.9 290.4	119.6 269.4	118.1 257.8	121.7 348.6	125.9 323.2



6000	ATTOL	VGSI and RNAV glidepath not coincident (VGSI Angle 3.00/TCH 70).	3560	3669					
			OGUVE	ZAKVA	WOSEP	SIALS	CUBAR	SMYRF	
			4400	4600	4800	5000	5500	6800	
			3548	4400	4600	4800	5000	5500	
			2 NM	2.7 NM	0.6 NM	0.6 NM	0.5 NM	2.2 NM	5.5 NM
CATEGORY	A	B	C	D					
RNP 0.15 DA		3288-1 ³ / ₈	417 (500-1 ³ / ₈)						

AUTHORIZATION REQUIRED