

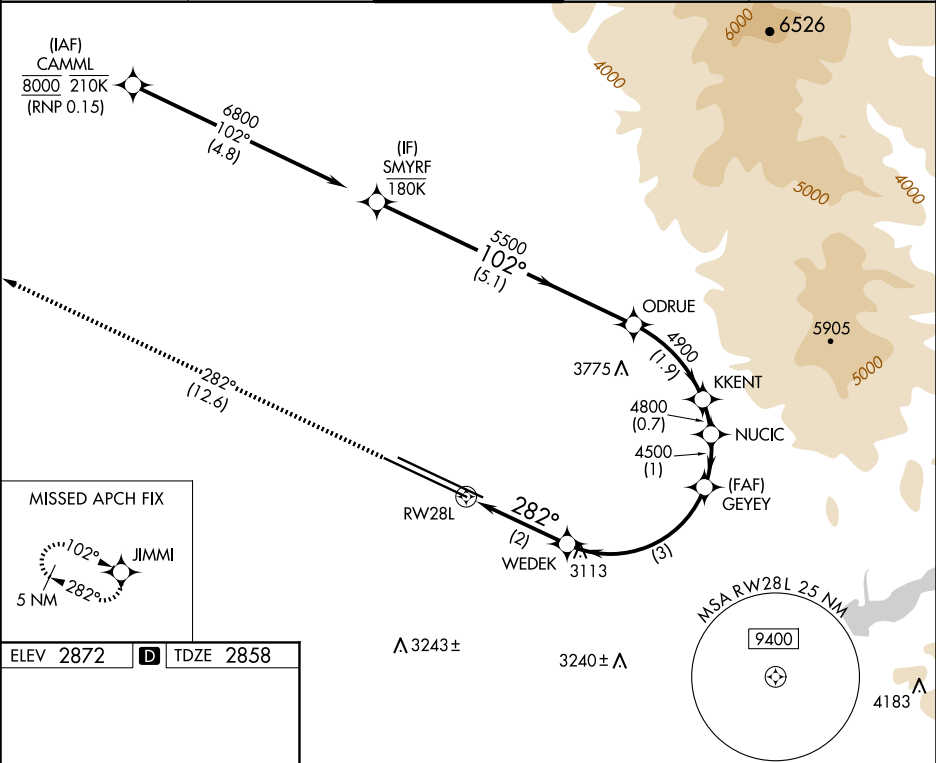
APP CRS	Rwy Ldg	9763
282°	TDZE	2858
	Apt Elev	2872

RNAV (RNP) X RWY 28L

BOISE AIR TRML/GOWEN FLD (BOI)

RNP AR APCH - GPS.	MALSR	MISSED APPROACH: Climb to 6000 on track 282° to JIMMI and hold, continue climb-in-hold to 6000.
For uncompensated Baro-VNAV systems, procedure NA below -14°C or above 54°C.		




D-ATIS	BIG SKY APP CON	BOISE TOWER	GND CON	CLNC DEL
123.9 290.4	119.6 269.4	118.1 257.8	121.7 348.6	125.9 323.2



ELEV 2872

TDZE 2858

REIL Rwy 10L
TDZ/CL Rwy 10R and 28L
HIRL Rwy 10L-28R and 10R-28L

6000 ↑ tr 282°	JIMMI 	VGSI and RNAV glidepath not coincident (VGSI Angle 3.00/TCH 50).					
		WEDEK	GEYEE	NUCIC	KKENT	ODRUE	SMYRF
		3545	4500				
			4500	4800	4900	5500	6800
RW28L 							102°
		2 NM	3 NM	1 NM	0.7 NM	1.9 NM	5.1 NM
CATEGORY		A	B		C		D
RNP 0.15 DA	3229/35 371 (400-5%)						
AUTHORIZATION REQUIRED							