

LOC/DME I-BOI <b><u>111.1</u></b> Chan <b>48</b>	APP CRS <b>102°</b>	Rwy Ldg <b>9763</b> TDZE <b>2836</b> Apt Elev <b>2872</b>
--	------------------------	---

ILS Y RWY 10R (SA CAT I)  
BOISE AIR TRML/GOWEN FLD (BOI)

DME required. RNAV 1 - GPS. From SALLA and RENOL.

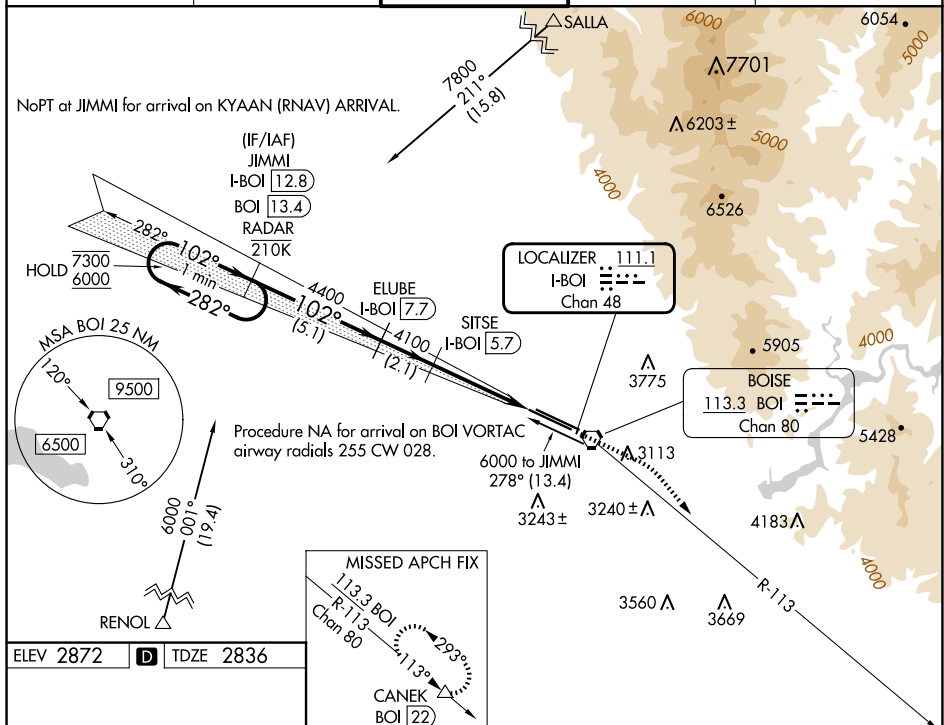
**T** Requires specific OPSPEC, MSPEC, or LOA approval and use of HUD to DH.

ALSF-2

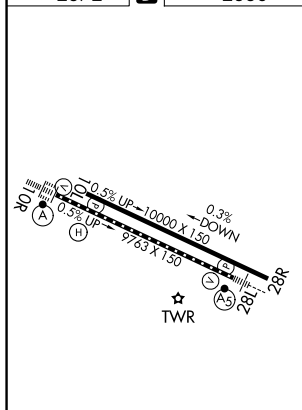
**MISSED APPROACH:** Climb to 3300 then climbing right turn to 7300 on BOI VORTAC R-113 to CANEK/BOI VORTAC 22 DME and hold.

D-ATIS	BIG SKY APP CON	BOISE TOWER	GND CON	CLNC DEL
123.9 290.4	119.6 269.4	118.1 257.8	121.7 348.6	125.9 323.2

NoPT at JIMM for arrival on KYAAN (RNAV) ARRIVAL.



ELEV 2872	<b>D</b>	TDZE 2836
-----------	----------	-----------



REIL Rwy 10L  
TDZ/CL Rwy 10R and 28L  
HIRL Rwy 10L-28R and 10R-28L

SA CATEGORY I ILS - SPECIAL AIRCREW  
& AIRCRAFT CERTIFICATION REQUIRED