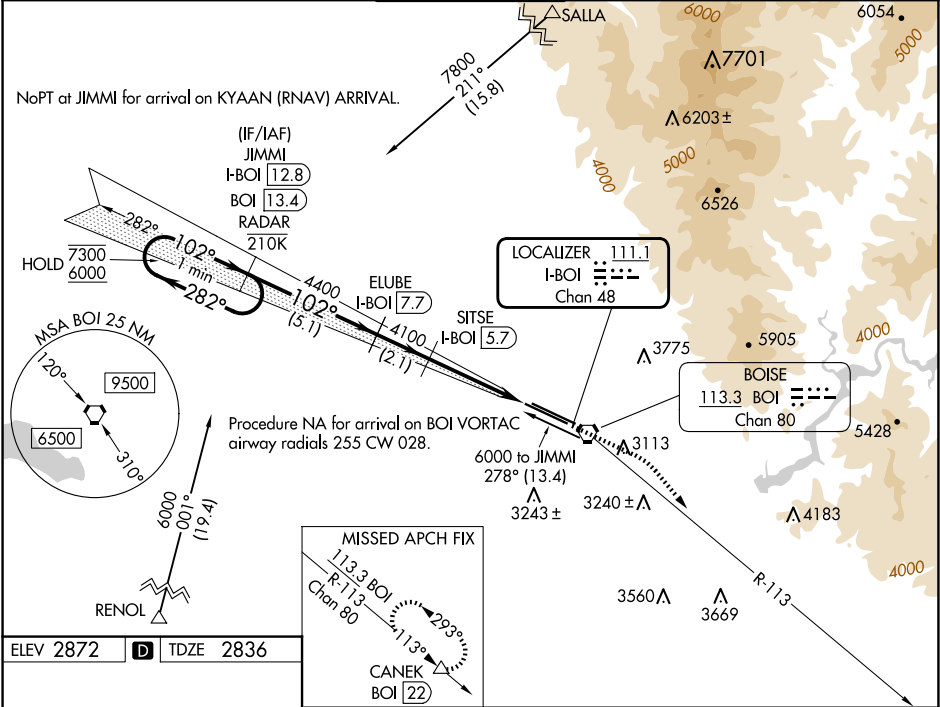


LOC/DME I-BOI	APP CRS	Rwy Ldg	9763
111.1	102°	TDZE	2836
Chan 48		Apt Elev	2872

ILS Y RWY 10R (CAT II & III)
BOISE AIR TRML/GOWEN FLD (BOI)

DME required. RNAV 1 - GPS. From SALLA and RENOL.	ALSF-2	MISSED APPROACH: Climb to 3300 then climbing right turn to 7300 on BOI VORTAC R-113 to CANEK/BOI VORTAC 22 DME and hold.
CAT II: RVR 1000 authorized with specific OPSPEC, MSPEC, or LOA approval and use of autoland or HUD to touchdown.		

D-ATIS 123.9 290.4	BIG SKY APP CON 119.6 269.4	BOISE TOWER 118.1 257.8	GND CON 121.7 348.6	CLNC DEL 125.9 323.2
-----------------------	--------------------------------	----------------------------	------------------------	-------------------------



	VGSI and ILS glidepath not coincident (VGSI Angle 3.00/TCH 64).				<div>3300</div> <div>7300</div> <div>CANEK</div>
	One Minute Holding Pattern	JIMMI I-BOI 12.8 BOI 13.4 RADAR	ELUBE I-BOI 7.7	SITSE I-BOI 5.7	Use I-BOI DME when on the localizer course.
	7300 6000	282° 102°	102° 4400	4100	
	GS 3.00° TCH 54	5.1 NM	2.1 NM	3.8 NM	978'
CATEGORY	A	B	C	D	
S-ILS 10R	CAT II RA 124/12 100 DA 2936				
S-ILS 10R	CAT III RVR 03				
CATEGORY II & III ILS - SPECIAL AIRCREW & AIRCRAFT CERTIFICATION REQUIRED					

NW-1, 07 AUG 2025 to 04 SEP 2025

NW-1, 07 AUG 2025 to 04 SEP 2025