

VORTAC BOI 113.3 Chan 80	APCH CRS 278°	Rwy Idg 28L 9762 28R 9999 TDZE 28L 2858 28R 2872 Arprt Elev 2872
--	-------------------------	---

HI-VOR Z or TACAN Z RWY 28L

[USAF]

BOISE AIR TERMINAL (GOWEN FLD) (KBOI)

DME required

T * When ALS inop, increase vis to 1½ miles.
** Circling not authorized N of Rwy 10L-28R.

MALSR

MISSED APPROACH: Climb to 6000 on BOI VORTAC R-278 to JIMMI/13.4 DME and hold.

ATIS
123.9 290.4

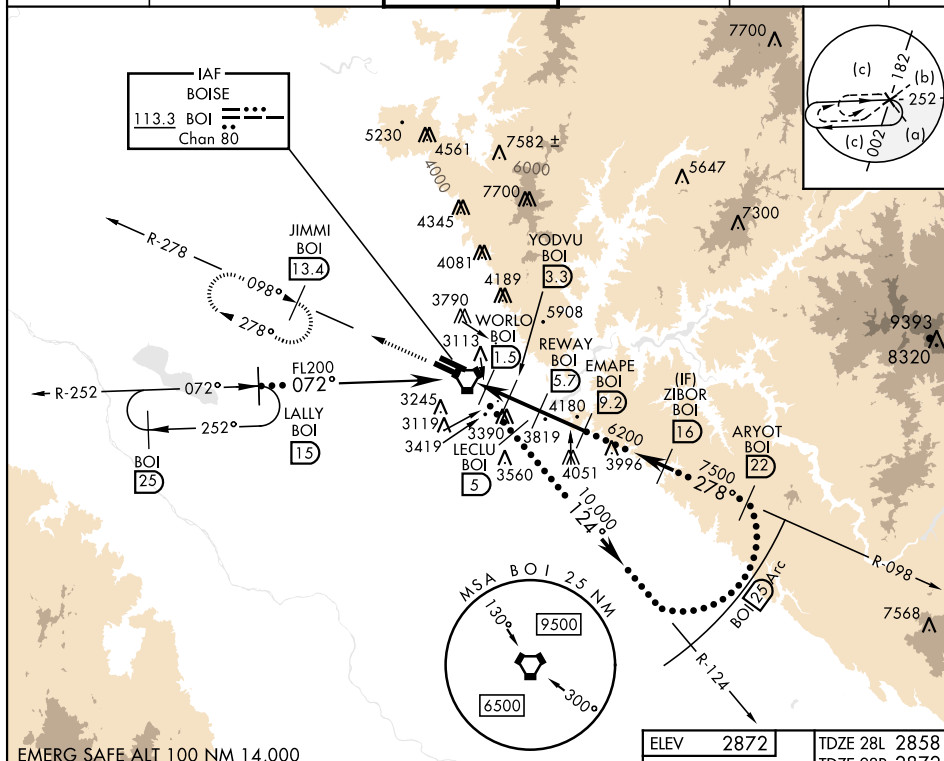
BIG SKY APP CON
119.6 269.4

BOISE TOWER
118.1 257.8

GND CON
121.7 348.6

CLINC DEL
125.9 323.2

ASOS

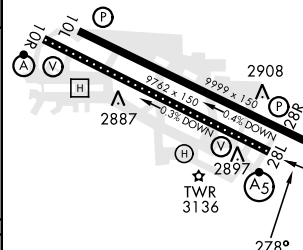
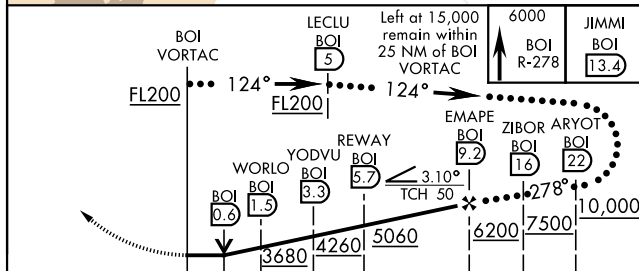


EMERG SAFE ALT 100 NM 14,000

ELEV	2872
------	------

TDZE 28L 2858

TDZE 28R 2872



	0.8	1.5 NM	1.8 NM	2.4 NM	3.5 NM
CATEGORY	C			D	E
S-28L *	3380/55			522	(600-1)
SIDESTEP	3380-1½			508	(600-2½)
RWY 28R	508 (600-1½)				
CIRCLING **	3620-2½			3880-3	
	748 (800-2½)			948 (1000-3)	1008 (1100-3)

TDZL/CL Rwy 10R-28L
HIRL Rwys 10L-28R, 10R-28L
REIL Rwy 10L

BOISE, IDAHO

43°34'N-116°13'W

BOISE AIR TERMINAL (GOWEN FLD) (KBOI)

Amdt 4 08SEP22

HI-VOR Z or TACAN Z RWY 28L