

VORTAC BOI <b><u>113.3</u></b> Chan <b>80</b>	APCH CRS <b>098°</b>	Rwy Idg <b>9762</b> TDZE <b>2836</b> Arpt Elev <b>2872</b>
---	-------------------------	--

[USAF]

BOISE AIR TERMINAL (GOWEN FLD) (KBOI)

DME required

ALSF-2
--------

**MISSED APPROACH:** Climb to 7300 on BOI VORTAC R-113 to CANEK/22 DME and hold.

ATIS
123.9 290.4

BIG SKY APP CON  
119.6 269.4

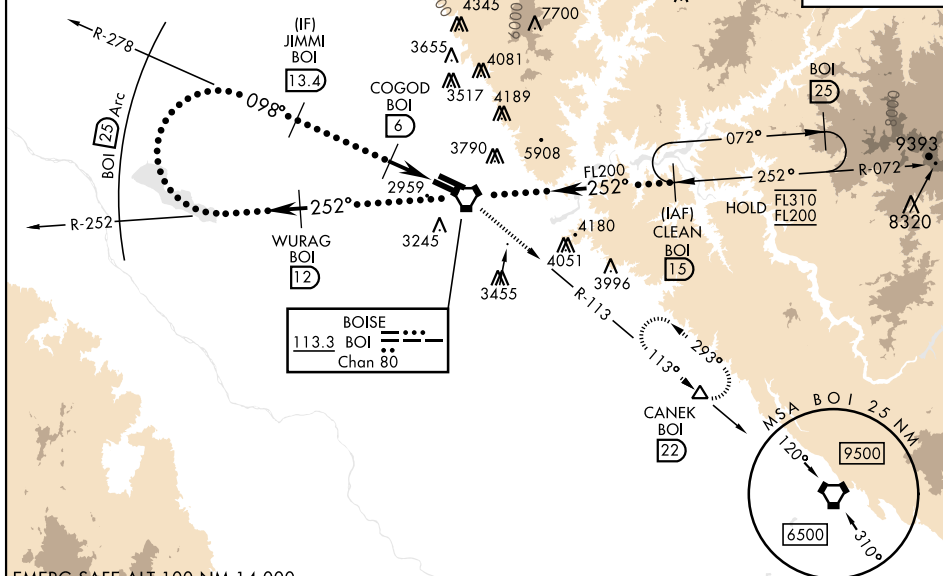
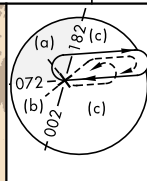
BOISE TOWER  
118.1 257.8

GND CON  
121.7 348.6

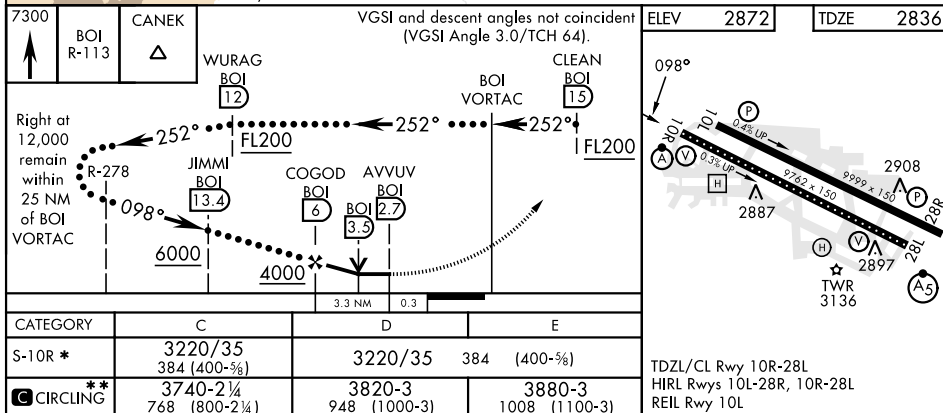
CLNC DEL  
**125.9 323.2**

ASOS

\*\* Circling not authorized N of Rwy 10L-28R.



EMERG SAFE ALT 100 NM 14,000



BOISE, IDAHO

43°34'N-116°13'W

BOISE AIR TERMINAL (GOWEN FLD) (KBOI)

Amdt 2 08SEP22

HI-VOR or TACAN RWY 10R