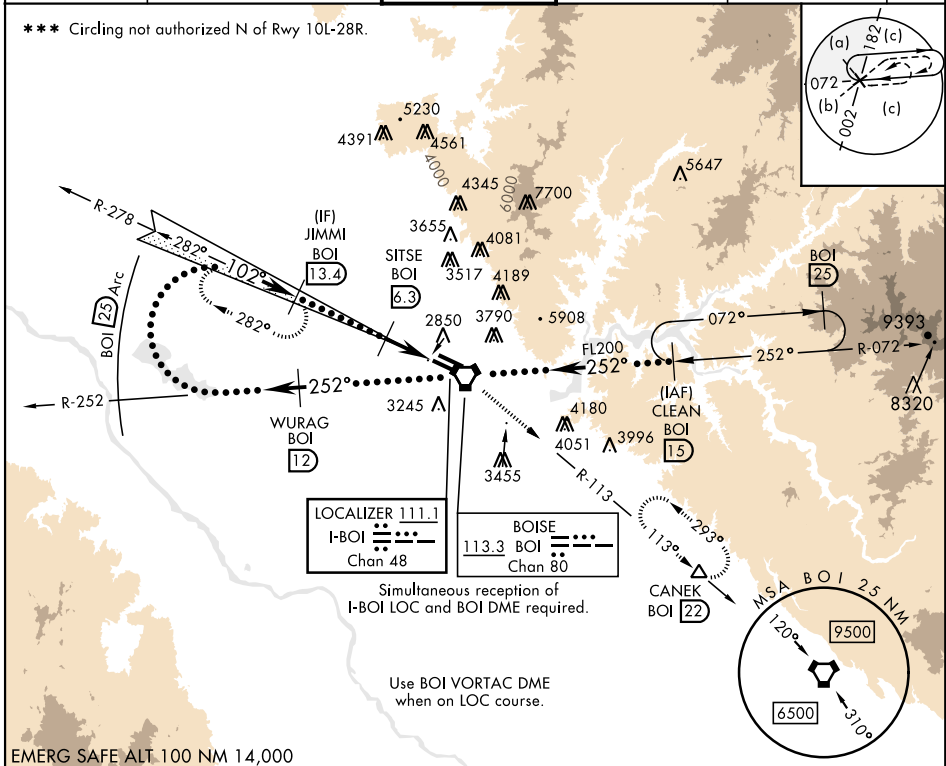


HI-ILS Z or LOC Z RWY 10R

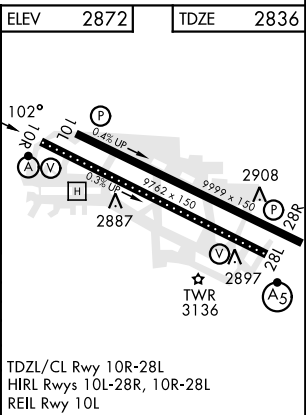
LOC I-BOI 111.1	APCH CRS 102°	Rwy Idg TDZE Arprt Elev 9762 2836 2872	[USAF]	BOISE AIR TERMINAL (GOWEN FLD)	(KBOI)
DME required			ALSF-2	MISSED APPROACH: Climb to 7300 on BOI VORTAC R-113 to CANEK/BOI 22 DME and hold.	
ATIS 123.9 290.4	BIG SKY APP CON 119.6 269.4	BOISE TOWER 118.1 257.8	GND CON 121.7 348.6	CLNC DEL 125.9 323.2	ASOS

*** Circling not authorized N of Rwy 10L-28R.



EMERG SAFE ALT 100 NM 14,000

7300 ↑ BOI R-113	CANEK △	WURAG BOI 12	VGSI and ILS glidepath not coincident (VGSI Angle 3.00/TCH 64).		CLEAN BOI 15	ELEV 2872	TDZE 2836
Right at 12,000 remain within 25 NM of BOI VORTAC		FL200	252°	252°	252°	FL200	
GS 3.00° TCH 54		JIMMI BOI 13.4	6000	4100	4100	AVVUV BOI 2.7	
		SITSE BOI 6.3	3.4	3.6 NM	0.3		
CATEGORY	C	D	E				
S-ILS 10R **	3036/18	200	(200-½)				
S-LOC 10R **	3200/35	364	(400-¾)				
***	3640-2¼ 768 (800-2¼)	3820-3 948 (1000-3)	3880-3 1008 (1100-3)				
CIRCLING							



HI-ILS Z or LOC Z RWY 10R