

WAAS CH 45626 W26A	APP CRS 246°	Rwy Idg TDZE Apt Elev	6543 396 400
--	------------------------	-----------------------------	---

RNAV (GPS) RWY 26

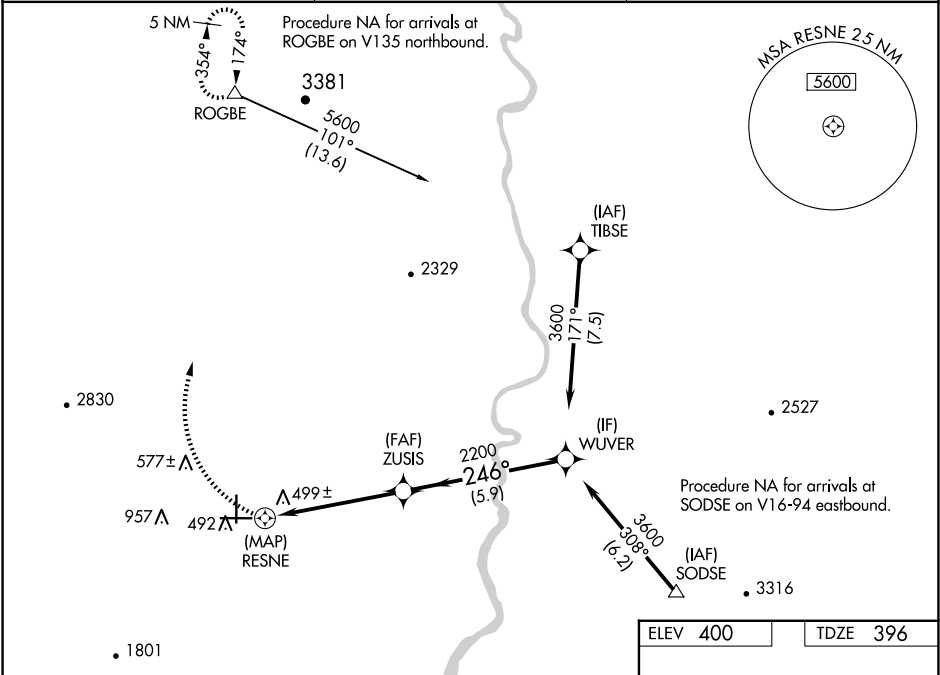
BLYTHE (BLH)

⚠

When local altimeter setting not received, procedure NA.
DME/DME RNP-0.3 NA. Helicopter visibility reduction below ¾ SM NA.
#Missed approach requires a minimum climb of 375 feet per NM to 3500.
*Missed approach requires a minimum climb of 345 feet per NM to 3500.

MISSED APPROACH: Climbing right turn to 5400 direct ROGBE and hold, continue climb-in-hold to 5400.

ASOS 120.175	LOS ANGELES CENTER 128.15 285.6	UNICOM 122.8 (CTAF) 0
------------------------	---	---------------------------------



5400	ROGBE	WUVER	
