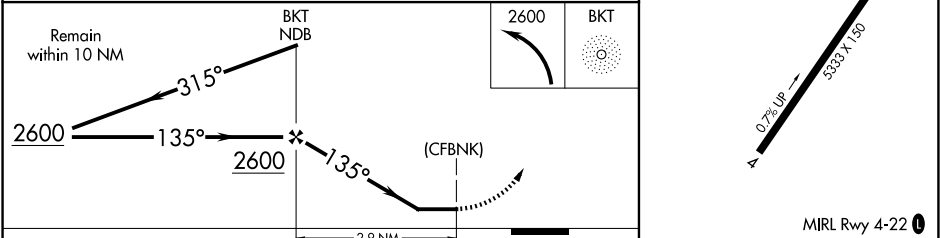
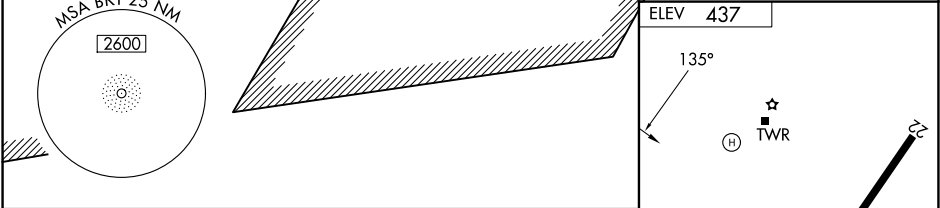
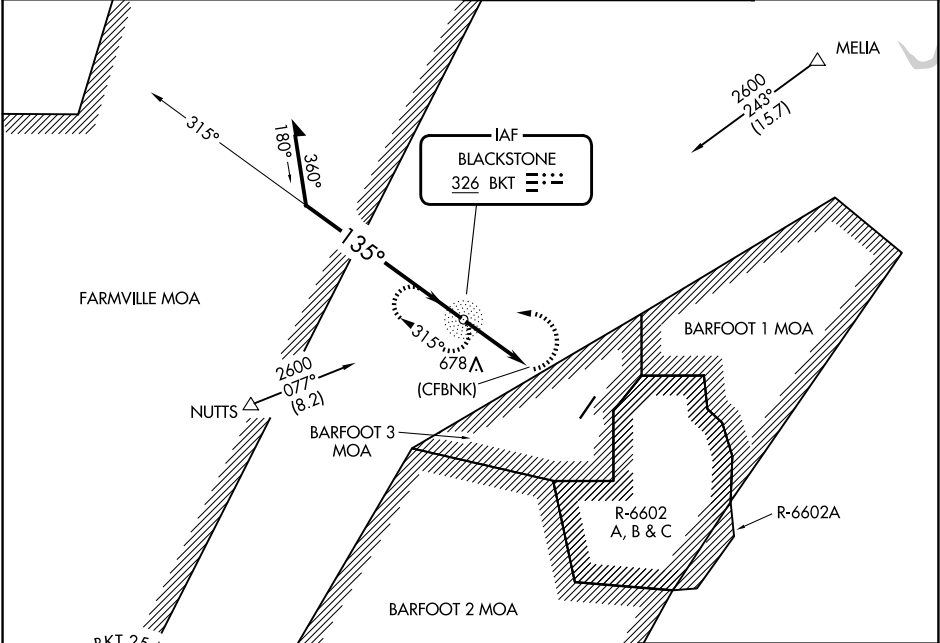


NDB BKT 326	APP CRS 135°	Rwy Ldg TDZE Apt Elev	N/A N/A 437	NDB-A
ALLAN C PERKINSON/BLACKSTONE AAF (BKT)				

Circling NA east of Rwy 4-22.

MISSED APPROACH: Climbing left turn to 2600 direct BKT NDB and hold, continue climb-in-hold to 2600.

ATIS 119.225	WASHINGTON CENTER 118.75 377.1	BLACKSTONE TOWER★ 134.7 (CTAF) 292.7	GND CON 127.625
-----------------	-----------------------------------	---	--------------------



CATEGORY	A	B	C	D	FAF to MAP 2.9 NM					
CIRCLING	980-3	543 (600-3)	1000-3 563 (600-3)	NA	Knots	60	90	120	150	180
					Min:Sec	2:54	1:56	1:27	1:10	0:58