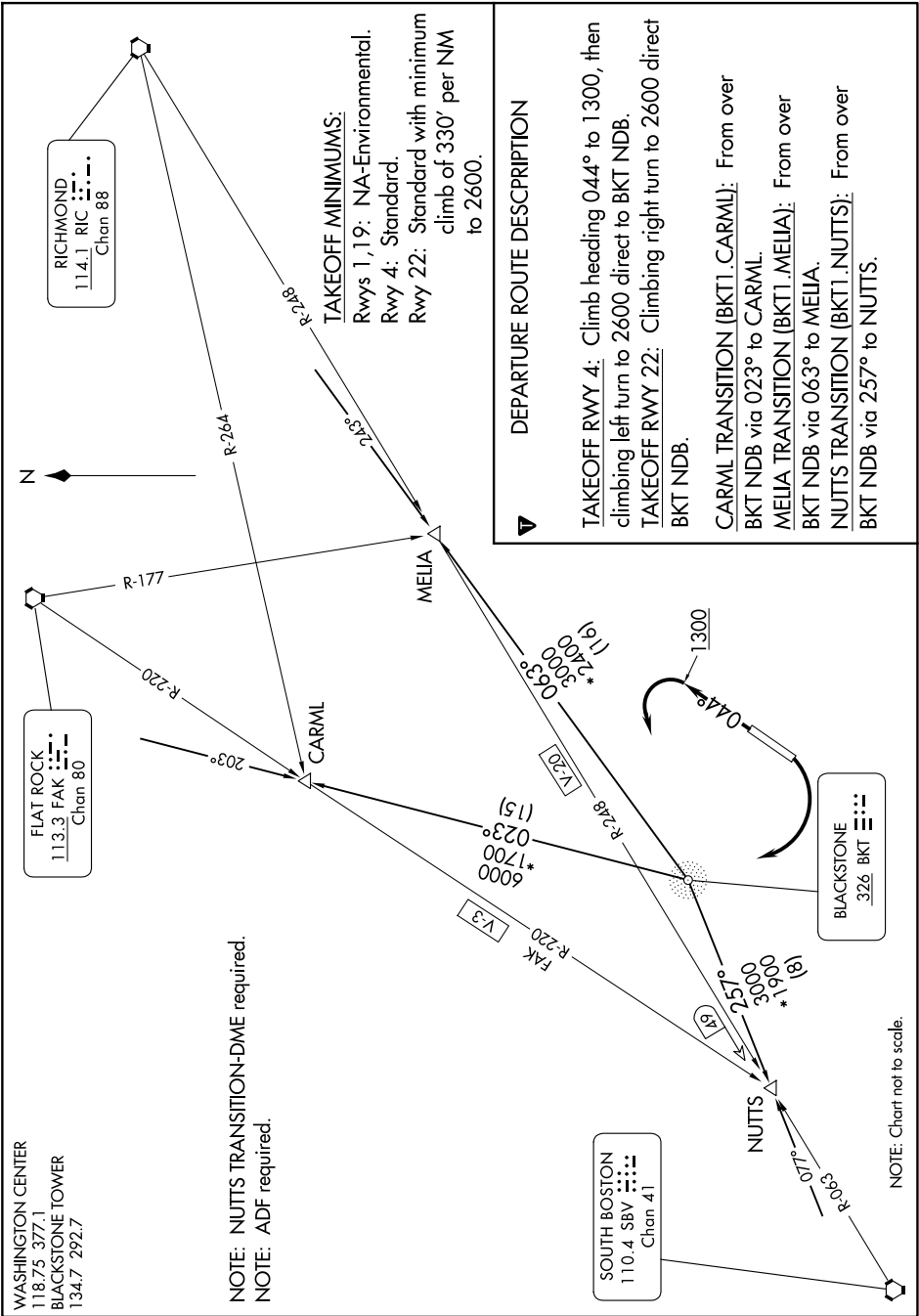


BLACKSTONE ONE DEPARTURE

NE-3, 07 AUG 2025 to 04 SEP 2025



DEPARTURE ROUTE DESCRIPTION

TAKEOFF RWY 4: Climb heading 044° to 1300, then climbing left turn to 2600 direct to BKT NDB.

TAKEOFF RWY 22: Climbing right turn to 2600 direct BKT NDB.

CARML TRANSITION (BKT1.CARML): From over BKT NDB via 023° to CARML.

MELIA TRANSITION (BKT1.MELIA): From over BKT NDB via 063° to MELIA.

NUTTS TRANSITION (BKT1.NUTTS): From over BKT NDB via 257° to NUTTS.

WASHINGTON CENTER
118.75 377.1
BLACKSTONE TOWER
134.7 292.7

SOUTH BOSTON
110.4 SBV
Chan 41

BLACKSTONE
326 BKT

NOTE: Chart not to scale.

BLACKSTONE ONE DEPARTURE

NE-3, 07 AUG 2025 to 04 SEP 2025