

LOC/DME I-BIS	APP CRS	Rwy Ldg	8794
110.3	311°	TDZE	1645
Chan 40		Apt Elev	1661

ILS or LOC RWY 31

BISMARCK MUNI (BIS)

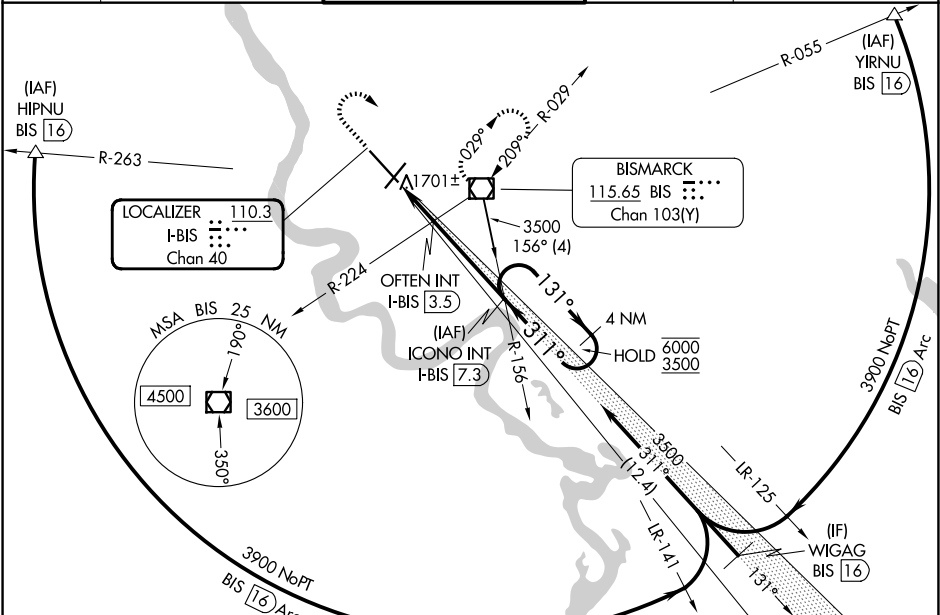
DME required for procedure entry.

Autopilot coupled approach NA below 2680.
For inop ALS, increase S-LOC 31 OFTEN FIX Cat C/D
minimums visibility to RVR 5500.

MALSR

MISSED APPROACH: Climb to 2800 then climbing
right turn to 3600 direct BIS VOR/DME and hold.

ATIS 119.35	BISMARCK APP CON★ 126.3 298.9	BISMARCK TOWER★ 118.3 (CTAF) 0 257.8	GND CON 121.9	UNICOM 122.95
-----------------------	---	--	-------------------------	-------------------------



ELEV 1661 D TDZE 1645	
<div><div>2800 3600 BIS</div><div>Use I-BIS DME when on the localizer course.</div><div>ICONO INT I-BIS 7.3</div><div>4 NM Holding Pattern</div><div>*LOC only.</div><div>*I-BIS 2.6</div><div>I-BIS 1.6</div><div>2300*</div><div>131° 311° 3500 6000 3500</div><div>GS 3.00° TCH 48</div><div>1 NM 0.9 NM 3.8 NM</div></div>	
CATEGORY	A B C D
S-ILS 31	1845/24 200 (200-½)
S-LOC 31	2300/24 655 (700-½) 2300-1⅓ 655 (700-1⅓)
CIRCLING	2300-1 639 (700-1) 2460-2¼ 799 (800-2¼) 2460-2½ 799 (800-2½)
OFTEN FIX MINIMUMS (DUAL VOR RECEIVERS OR DME REQUIRED)	
S-LOC 31	2020/24 375 (400-½) 2020/35 375 (400-⅝)
CIRCLING	2240-1 579 (600-1) 2460-2¼ 799 (800-2¼) 2460-2½ 799 (800-2½)

REIL Rwys 3 and 21

HIRL Rwys 3-21 and 13-31

FAF to MAP 5.7 NM

Knots	60	90	120	150	180
Min:Sec	5:42	3:48	2:51	2:17	1:54