

LOC I-BZX <u>111.5</u>	APP CRS 131°	Rwy Ldg 8794 TDZE 1655 Apt Elev 1661
----------------------------------	------------------------	-----------------------------------------------------------------

ILS or LOC RWY 13
BISMARCK MUNI (BIS)

				DME required for procedure entry.	DME required.
--	--	--	--	-----------------------------------	---------------

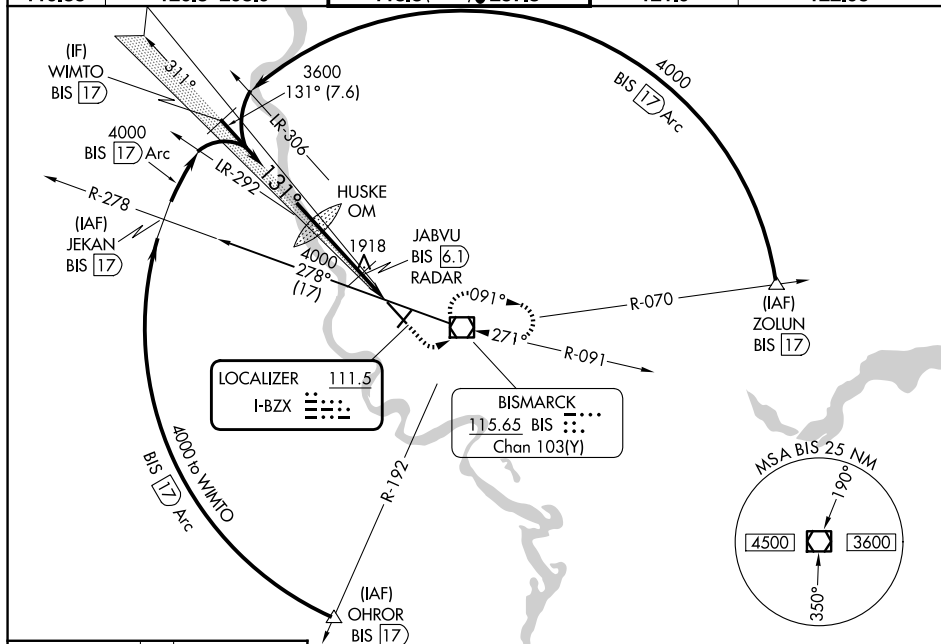


Inop table does not apply to S-ILS 13. DME from BIS VOR/DME.
Simultaneous reception of I-BZX and BIS DME required.
DME from BIS VOR/DME.

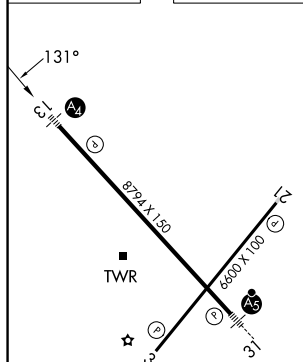


MISSED APPROACH: Climb to 2200 then climbing left turn to 3600 direct BIS VOR/DME and hold, continue climb-in-hold to 3600.

ATIS 119.35	BISMARCK APP CON ★ 126.3 298.9	BISMARCK TOWER ★ 118.3 (CTAF) 0257.8	GND CON 121.9	UNICOM 122.95
----------------	-----------------------------------	-----------------------------------------	------------------	------------------

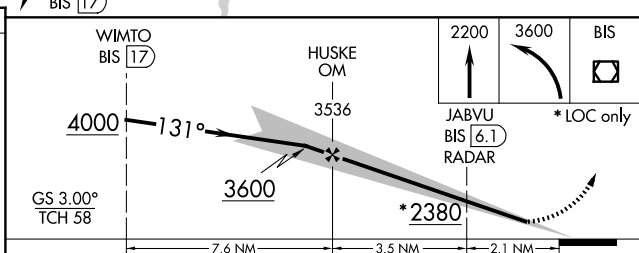


ELEV 1661	D	TDZE 1655
-----------	----------	-----------



REIL Rwy 3 and 21
HIRL Rwy 3-21 and 13-31

FAF to MAP 5.6 NM					
Knots	60	90	120	150	180
Min:Sec	5:36	3:44	2:48	2:14	1:52



CATEGORY	A	B	C	D
S-ILS 13	1855- $\frac{3}{4}$ 200 (200- $\frac{3}{4}$)			
S-LOC 13	2380- $\frac{3}{4}$	725 (800- $\frac{3}{4}$)	2380-1 $\frac{3}{4}$	725 (800-1 $\frac{3}{4}$)
CIRCLING	2380-1	719 (800-1)	2460-2 $\frac{1}{4}$ 799 (800-2 $\frac{1}{4}$)	2460-2 $\frac{1}{2}$ 799 (800-2 $\frac{1}{2}$)
# JABVU FIX MINIMUMS				
S-LOC 13	2180- $\frac{3}{4}$	525 (600- $\frac{3}{4}$)	2180-1 $\frac{1}{4}$	525 (600-1 $\frac{1}{4}$)
CIRCLING	2200-1	539 (600-1)	2460-2 $\frac{1}{4}$ 799 (800-2 $\frac{1}{4}$)	2460-2 $\frac{1}{2}$ 799 (800-2 $\frac{1}{2}$)