

WAAS CH 82014 W06A	APP CRS 058°	Rwy Idg 12007 TDZE 606 Apt Elev 650
--	------------------------	--

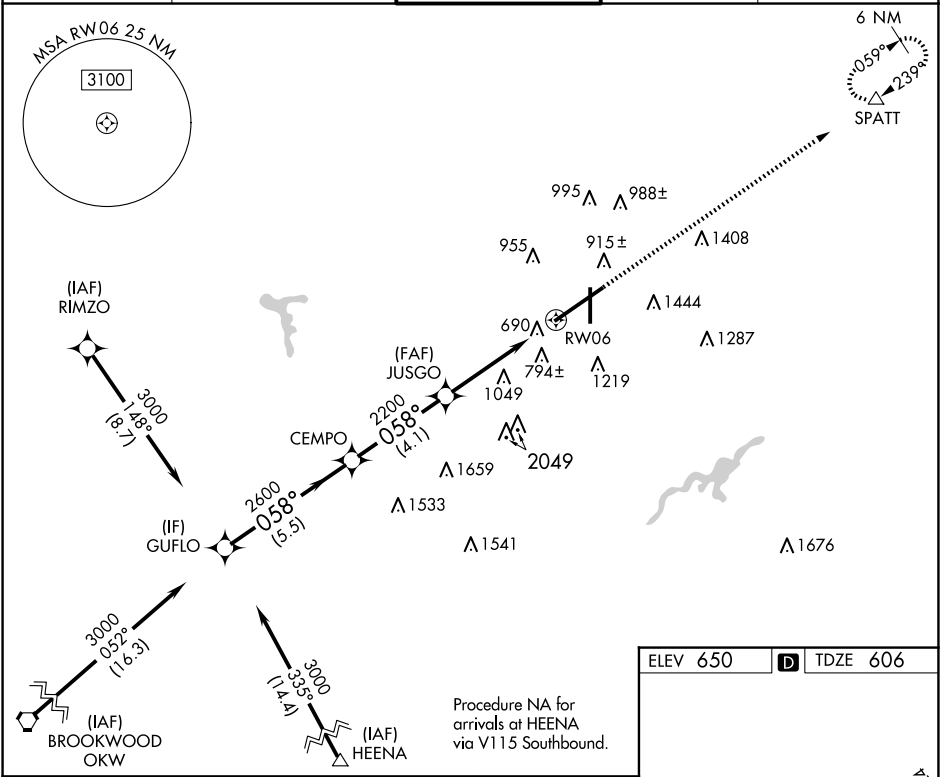
RNAV (GPS) Y RWY 6
BIRMINGHAM-SHUTTLESWORTH INTL (BHM)

RNP APCH.
▼ For uncompensated Baro-VNAV systems, LNAV/VNAV NA below -16°C (4°F) or above 47°C (116°F).
▲

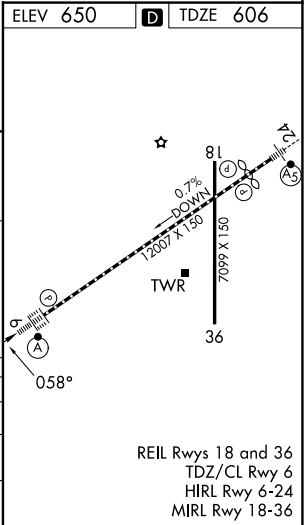
ALSIF-2
A

MISSED APPROACH: Climb to 3300 direct SPATT and hold.

ATIS 119.4 270.1	BIRMINGHAM APP CON 123.8 256.8	BIRMINGHAM TOWER 119.9 317.725	GND CON 121.7 348.6	CLNC DEL 125.675 305.2
----------------------------	--	--	-------------------------------	----------------------------------



GUFLO		VGSi and RNAV glidepath not coincident (VGSi Angle 3.00/TCH 68).		3300	SPATT
3000		CEMPO	JUSGO	*RNAV only.	
Procedure Turn NA		2600	*2.4 NM to RW06	RW06	
GP 3.00° TCH 53		2200			
5.5 NM		4.1 NM	2.4 NM	2.4 NM	
CATEGORY	A	B	C	D	
LPV DA	806/18		200 (200-½)		
LNAV/VNAV DA	1120/60		514 (500-1¼)		
LNAV MDA	1440/24 834 (800-½)	1440/40 834 (800-¾)	1440-2 834 (800-2)	1440-2¼ 834 (800-2¼)	



SE-4, 07 AUG 2025 to 04 SEP 2025

SE-4, 07 AUG 2025 to 04 SEP 2025