

TACAN RWY 22

TACAN BIX Chan 55	APCH CRS 222°	Rwy Idg 6630 THRE 17 Arpt Elev 33
-----------------------------	-------------------------	--

[USAF]

KEESLER AFB (KBIX)

T * When ALS inop, increase CAT AB RVR to 55, vis to 1 mile; CAT CD vis to 1¾ miles.

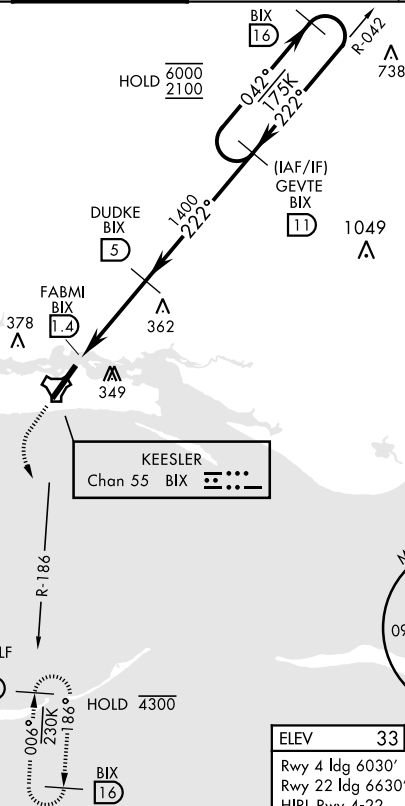
ALSF-1

† MISSED APPROACH: Climb to 800 tracking 215°, then turn left to intercept BIX R-186 to 11 DME (RUDLF) climbing to 2200 and hold.

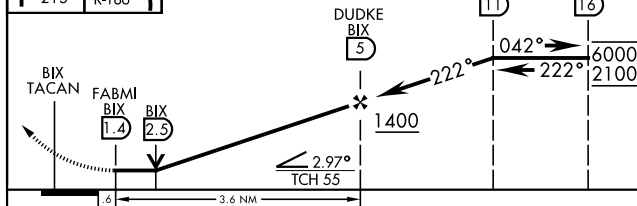
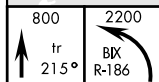
ATIS★ 281.55	GULFPORT APP CON★ 124.6 354.1 (130°- 309°) 127.5 254.25 (310°- 129°)	TOWER★ 120.75 269.075	GND CON★ 121.8 275.8	CLNC DEL 121.8 275.8
-----------------	--	--------------------------	-------------------------	-------------------------


• 272

† Missed Approach requires use of RNAV or ATC RADAR monitoring.



EMERG SAFE ALT 100 NM 3100



CATEGORY	A	B	C	D
S-22*	620/40	603 (600- $\frac{3}{4}$)	620- $\frac{1}{2}$	603 (600- $\frac{1}{2}$)
 CIRCLING	620-1 587 (600-1)	660-1 627 (700-1)	680- $\frac{1}{4}$ 647 (700- $\frac{1}{4}$)	680-2 647 (700-2)

ELEV 33

Rwy 4 ldg 6030'

Rwy 22 ldg 6630'

HIRL Rwy 4-22

REIL Rwy 4

THRE 17

222°

69 Λ

74 Δ

45 Δ

74 Δ

150

7650 ± 150

0.3 US

A1

P

98

175 Λ

TWR

195

195 Λ

195 Λ

195 Λ

195 Λ

Rwy 22 2000' non-std
apch lgt system